



UZUMCU
MEDICAL EQUIPMENT

Surgical Perfection

www.uzumcu.com.tr

Table of contents

04-29

OPERATING TABLES

Operating Tables	04
Operating Table Accessories	20
Gynecological Table	26

30-41

OPERATING LIGHTS

Operating Lights	30
Examination Lights	40

42-61

ELECTROSURGICAL DEVICES & SUCTION UNITS

Electrosurgical Devices	42
Electrosurgery Accessories	50
Surgical Suction Units	52
Portable Suction Devices	57
Cryotherapy Device	60

62-85

STAINLESS STEEL HOSPITAL EQUIPMENT

Scrub Sink	65	Laundry Collection Trolley	82
Brush Holder	66	Negatoscope	82
Liquid Soap Dispenser	67	Cap, Bonnet and Mask Cabinet	83
Instrument Table	68	Slipper Trolley	83
Operating Theatre Cabinet	69	Baby Washing Table	84
Bronchoscope Endoscope Cabinet	69	Plaster Preparation Table	84
Mayo Table	72	Packaging Table	85
Instrument Table	72	Emergency Trolley	86
Falcate Table	72	Medicine Trolley	90
Medicine Preparation Trolley	73	Dressing Trolley	90
Instrument Table with Drawer	73	Medicine Cabinet	91
Equipment Trolley	74	Mobile Medicine Shelf	91
Dressing Trolley	74	Hydraulic Stools	92
Anaesthesia Trolley	75	Kidney Trays and Bowls	93
Bowl Stands, Single-Double	76	Trommels	93
Foot Step	76	Morgue Unit	94
Waste Bin	76	Autopsy Table	94
Sterile Device and Cloth Trolley	77	Body Washing Table	95
Medical Waste Trolley	77	Lift for Morgue	95
Housekeeping Trolley	78		
IV Stand	79		
Ultrasonic Cleaning Unit	80		

“Technical superiority achieved by more than 50 years of experience”

With its advanced technical infrastructure, Üzümcü produces operating tables in different systems suitable for many surgical disciplines.

Üzümcü offers electro-hydraulic, electro-mechanical and fully mechanical operating tables for the needs of various requirements and surgical environment.

OPERATING TABLES





OPERATING TABLE OP-4P

Üzümcü OP-4P is a new generation electro-hydraulic table. Powerful and robust hydraulic systems increases the effectiveness of surgical operations by considering the needs of patients and surgeons.

- Safe patient positioning
- Optimum X-Ray transmittance
- Modular design
- Highly resistant body
- Positioning with hand, body control
- Telescopic height adjustment
- Rapid mobilization
- Conductive castors with central locking system
- Optional visco mattress



OPERATING TABLE OP-2P, OP-2V

Üzümçü OP-2P is an advanced new generation electro-mechanical operating table. It offers high mobility in & out of surgical area with its 125 mm heavy duty medical castors.

- Safe patient positioning
- Positioning with hand, body control
- Telescopic height adjustment
- Remote control for kidney elevation located in the back rest 2 sections area
- Rapid mobilization
- 125 mm conductive castors with central locking system



OPERATING TABLE OM-6N

The Third Generation Üzümcü OM-6N table is one of the most advanced electro-mechanical table in field. It has 360 kgs capacity with maintenance-free actuators and has a new advanced hand remote controller.

- Safe patient positioning
- Optimum X-Ray image quality
- Modular design
- Highly resistant body
- Positioning with hand, body control
- Telescopic height adjustment
- remote control for kidney elevation located in the back rest 2 sections area
- Rapid mobilization
- Central locking system
- Optional visco mattress



OPERATING TABLE OM-2M

Üzümçü OM-2M operating table is an advanced fully mechanical operating table. It has all functions of general surgery tables and doesn't require any electric power for any of its movements. It makes this table suitable for any kind of surgery in any field including disaster recovery.

- Safe patient positioning
- Optimum X-Ray image quality
- Modular design
- Highly resistant body
- Optimal clearance in surgical area
- Telescopic height adjustment
- Optional visco mattress



MODEL	OP-4P	OP-2P
SIZES		
Width x Length	2200x610 mm	2200x610 mm
Height (min) (min - with mattress)	670 mm	810 mm
Height (max) (max - with mattress)	1110 mm	1210 mm
Sliding Movement	300 mm	300 mm
Max Patient Weight	360 kgs	360 kgs
ANGLES		
Lateral Tilt Movement	+20°/-20°	+20°/- 20°
Back Rest Movement	+80°/-45°	+90°/- 35°
Trendelenburg	+30°	+25°
Reverse Trendelenburg	-30°	-25°
Leg Rest Up / Down	+35°/-90°	+35°/-90°
Leg Rest Parallel Movement	80°	80°
Head Rest Movement	+30° / - 80°	+30° / -80°
Kidney Surgery Position	135°	135°
Flex / Reflex Position	+225° / -100°	+215° / -90°
ELECTRICAL MOVEMENTS		
Height	√	√
Back Rest	√	√
Trendelenburg	√	√
Reverse Trendelenburg	√	√
Lateral Tilt	√	√
Sliding	√	√
MECHANICAL MOVEMENTS		
Head Rest	√	√
Kidney Surgery Position	√	√
Leg Rests, Up / Down	√	√
Leg Rests, Right / Left	√	√
Central Locking	Electrical	√

*Tolerance values: ±5% for angles and ±25 mm for measurements



OP-2V	OM-6N	OM-2M
2200x610 mm	2200x610 mm	2200x610 mm
810 mm	810 mm	790 mm
1210 mm	1210 mm	1040 mm
300 mm	300 mm	NA
360 kgs	360 kgs	250 kgs
+20° / -20°	+20° / -20°	+30° / -30°
+90° / -35°	+90° / -35°	+30° / -30°
+40°	+25°	+40°
-20°	-25°	-20°
+35° / -90°	+35° / -90°	+35° / -90°
80°	80°	80°
+30° / -80°	+30° / -80°	+30° / -80°
135	135°	NA
+215° / -90°	+215° / -90°	NA
MECHANICAL MOVEMENTS		
√	√	√
√	√	√
√	√	√
√	√	√
√	√	√
√	√	NA
√	√	√
√	√	NA
√	√	√
√	√	√
√	√	√





Maximum comfort in
the operating theatre



HEALING BEGINS WITH ADVANCED SOLUTIONS



Functional Design

- Modular design taking shape by different surgical operations with high stability
- Solutions ensuring to reach the position required by any kind of surgical operations with its wide range of accessory options
- Telescopic body specifications enabling height adjustment at different levels
- Wheel system which is made of ABS plastic, with high multi-directional mobility and 125 mm in diameter (OP Series)



Sliding

- Image reception ability in a wide area without disturbing the sterile environment with the fluoroscopy device by its sliding feature within 300 mm on horizontal plane



Optimal Clearance In Surgical Area

- Maximum surgical area visibility with its kidney elevator, integrated on the table and adjustable up to 300° (120 mm)



Different Mattress Options

- Compact material table top with high X-Ray permeability that allows high-quality image reception
- Visco or polyurethane mattress options that ensure the patient's comfort by taking its body shape, thus preventing decubitus prophylaxis
- Advanced hygiene conditions thanks to compact material base with polyurethane moulding



Modular Design

- Design that can get different angles according to the type of surgery, demountable head and foot plates
- Unlimited perineal accessibility with demountable foot plate





Easy Approach for C-Arm

- Complete access to all table areas and its X-Ray permeable table top allow high image quality
- Suitable base structure for easy access and approach of the C-arm scopy and surgical microscopes



Accessory Positioning and Battery System

- Stainless steel rail attachment system integrated on both sides of the table, enabling accessory mounting without removing existing accessories
- Possibility of positioning the table in case of electricity cuts thanks to the rechargeable battery system that guarantees thirty movements



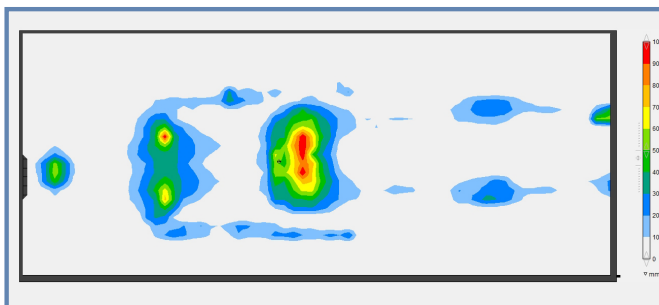
T-Base Specifications

- T-Base enables table optimal approach for the surgical team and equipment
- 316 quality stainless steel body resistant to fractures and corrosion
- Silent and nonvibrating operation



Multi Control System

- Multi control system with hand set and body control panel
- Rapid recall in case of need by storing five different surgery positions
- Position reset by a single button
- Easy use in endosurgery operations thanks to the illuminated screen



Optimum Mattress Performance

- Üzümcü operating table mattresses are designed and manufactured according to the Pressure Mapping test results.

OPERATING TABLE POSITIONS



Trendelenburg Position



Reverse Trendelenburg Position



Left Lateral Tilt Position



Right Lateral Tilt Position



Reflex Position



Flex Position



Chest (Breast) Surgery Position



Struma Surgery Position



Bariatric Laparoscopic Surgery Position



Anaesthesia Preparation and General Surgery Position



Chest Surgery Position



Kidney, Sternum Surgery Position





Kidney Surgery Position



Gynecologic and Urologic Surgery Position



Gynecologic, Urologic, Colorectal Surgery Position



Spinal, Proctologic Surgery Position



Spinal Surgery Position



Neurosurgery Position



Neurosurgery Position



Neurosurgery Position



Arthroscopic Knee Surgery Position



Meniscus Surgery Position



Orthopedic Fracture Surgery Position



Ophthalmology Position

Orthopedic Traction Set OM-520

- Orthopedic traction set is suitable for use with all Üzümcü operating tables in orthopedic surgeries
- Made of 304 quality stainless steel
- Leg strainer function by mechanical lever
- Traction boots with up & down movement and rotation capability around its own axis

DIMENSIONS (WxLxH) : 300x600x1200-1600 mm



Orthopedic Traction Set Accessory Trolley OM-550



Leg Positioning Boot OM-600

- An accessory designed for use in branches that require leg positioning
- Positioning system with one hand control and self-brakes
- Suitable for bariatric and obstetric surgeries

DIMENSIONS (WxLxH) : 210x965x545mm



Neurosurgery Head Rest & Horseshoe Head Rest OM-285

- Neurosurgery head rest especially designed for use in neurosurgery operation.
- Extremely durable and rigid construction from aluminum alloy
- 3 pcs fixing system with pins and completely adjustable skull clamps
- Adjustment mechanism from 4 different points
- Easily mountable horse shoe head rest accessory

DIMENSIONS (WxLxH) : 542x493x370mm

OPERATING TABLE ACCESSORIES

Arthroscopy Shoulder Support OM-340

- Designed for use in arthroscopy operations and suitable for use with all tables
- 7 stage back rest adjustment
- Head fixing section with up & down movement
- Special design offering easy reach to shoulder area
- Body fixing strap

DIMENSIONS (WxLxH):
560x640x900mm



Radiolucent Spine Frame OM-105

- Designed to meet all requirements with 60 degree radiolucent features.
- Posture control with improved surgical access for Laminectomy control for improved surgical access
- Easy to use crank system
- The design of the Radiolucent spine frame allows easy transport and storage

DIMENSIONS (WxLxH) : 500x750x250 mm





OM-120 Arm Support
OM-152 Hand-Wrist Strap



OM-100 Anaesthesia Screen



OM-110 IV Stand



OM-150 Body Strap



OM-220 Geopel Knee Crutch (Pair)



OM-380 Irrigation Bowl



OM-300 Cross Bar



OM-405 Clamp



OM-390 Clamp

OPERATING TABLE ACCESSORIES



OM-355 Carbonfiber Extension Board



OM-135 Shoulder / Lateral Support



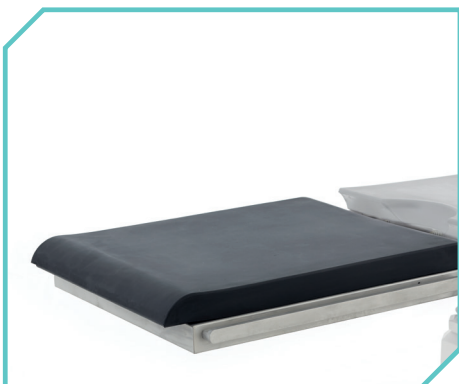
OM-200 Foot Support



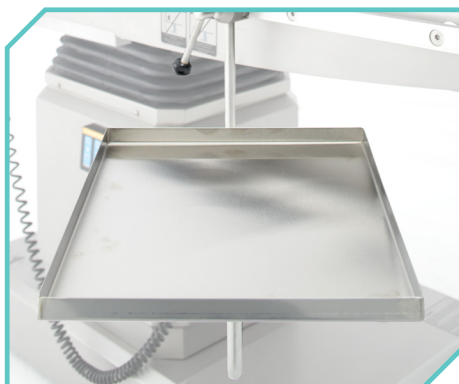
OM-310 Proctological Accessories



OM-155 Foot-Wrist Strap



OM-255 Extension Leg Plate



OM-330 X-Ray Cassette Holder



OM-995 Accessory Trolley





OM-345 Knee Arthroscopy Support



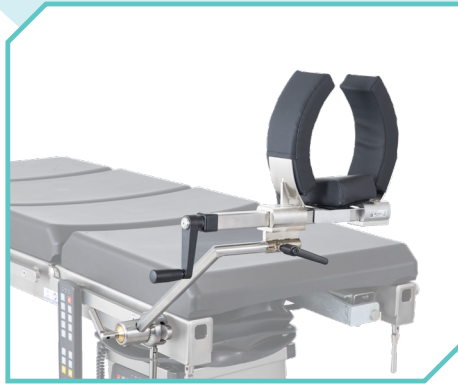
OM-265 Spine Surgery Positioning Frame



OM-295 Arm Rest Adjustable



OM-270 Ophthalmologic Head Support



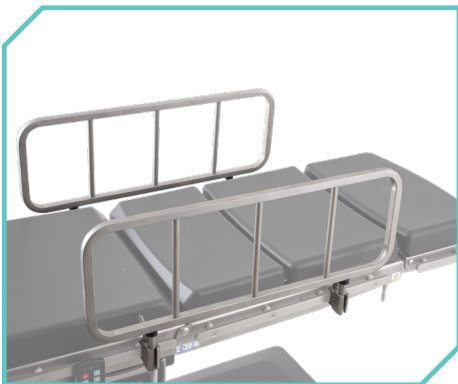
OM-610 Arthroscopic Leg Holder System



OM-215 Arm Rest For Lateral Patient Positioning



OM-275 Weinberger Hand Traction Set



OM-710 Side Rails



OM-385 Rinsing Bowl, Rectangular

OPERATING TABLE ACCESSORIES



OM-240 Knee Arthroscopy Support



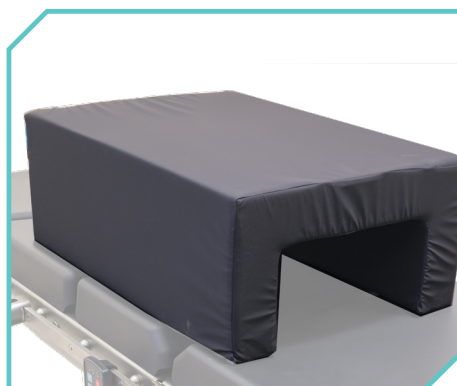
OM-250 Meniscus Positioning Roll



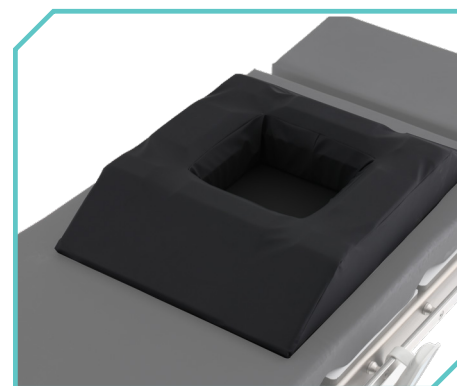
OM-365 Arm Surgery Plate



OM-700 Bariatric Extenders



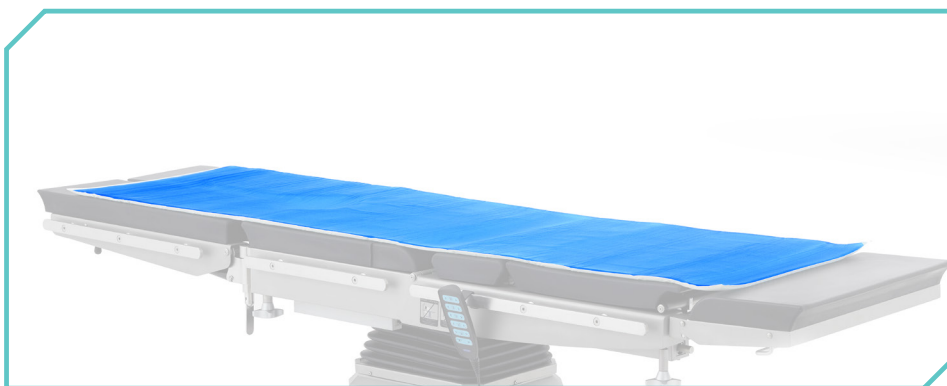
OM-465 Tunnel Cushion



OM-140 Chest Support

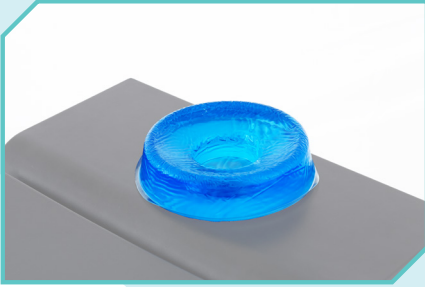


OM-446 Spinal Surgery Cushion with Silicone



OM-460 Mattress, Adult, Gel
OM-450 Mattress, Pediatric, Gel

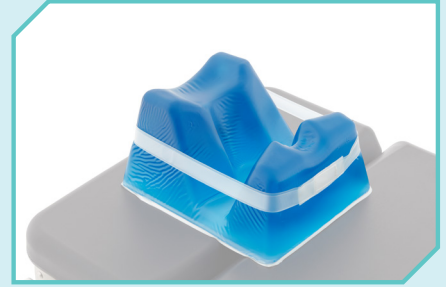




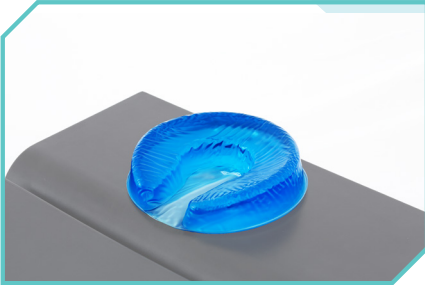
OM-430 Head Rest, Gel
OM-432 Head Rest, Gel, Pediatric



OM-431 Head Rest, PU
OM-433 Head Rest, Pediatric, PU



OM-415 Prone Head Support



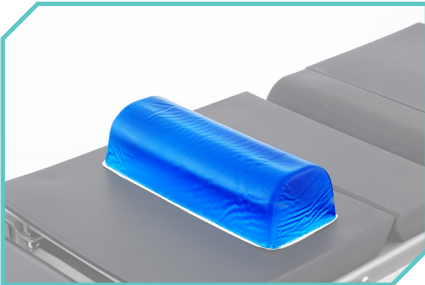
OM-410 Horseshoe Head Rest, Gel
OM-412 Horseshoe Head Rest, Gel, Pediatric



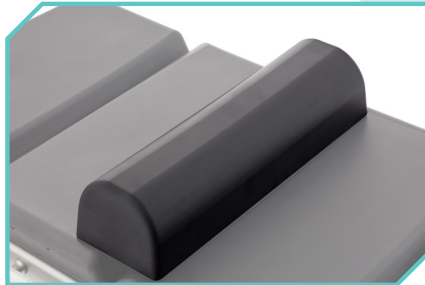
OM-411 Horseshoe Head Rest, PU
OM-413 Horseshoe Head Rest, Pediatric, PU



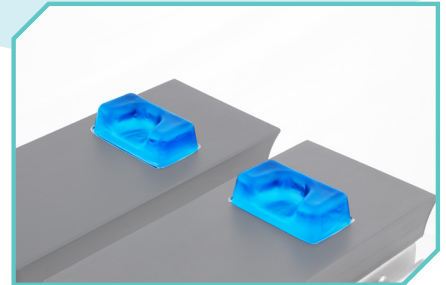
OM-420 Arm Rest, Gel



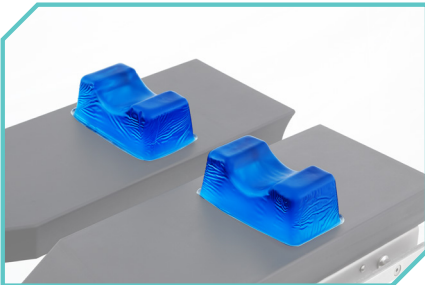
OM-440 Chest Cushion, Gel
OM-442 Chest Cushion, Gel Pediatric



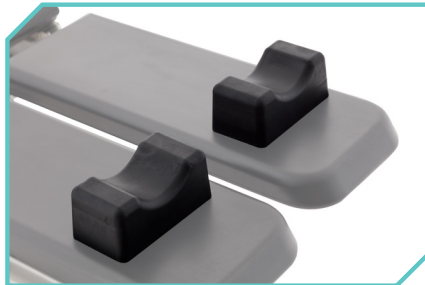
OM-441 Chest Cushion, PU



OM-425 Heel Rest, Gel



OM-428 Foot Wrist Rest, Gel



OM-429 Foot Wrist Rest, PU



OM-445 Silicon Lateral Position Support

GYNECOLOGICAL TABLE JM-4F

Üzümçü JM-4F Gynaecological Table is a new generation, functional examination table with its stylish design.

- Hygiene conditions and patient comfort. It can be easily cleaned in accordance with hospital decontamination
- Ergonomic examination
- Height adjustment and trendelenburg position
- Manually controllable back section
- Easily replaceable leg and foot rest accessories can be used for different gynecological operations
- Durable steel body with anti-bacterial ABS cover
- Hidden casters

Color options

-  Aqua
-  Cream
-  Green
-  Burgundy
-  Black
-  White



MODEL	JM-4F
SIZES	
Width x Length	650x1320 mm
Height (min)	540 mm
Height (max)	840 mm
ANGLES	
Back Rest Movement	50°
Trendelenburg	+30°
Reverse Trendelenburg	-25°
ELECTRICAL MOVEMENTS	
Height	✓
Back Rest	✓
Trendelenburg	✓



Foot Support
(Optional)

MANUAL GYNECOLOGICAL EXAMINATION TABLE JM-1A

JM-1A is a fully mechanical examination table.
It has functional drawers and cabinets to keep examination area tidy.

- The special functional design of the Üzümcü manual examination table can fulfill all the requirements of gynecological examination
- The drawers are designed to medical standards to help contain spills and improve infection control
- Length adjustable foot supports
- Easy to use drawer
- Back support
- Step drawer



Color options



Aqua Cream Green Burgundy



MODEL	JM-1A
SIZES	
Width x Length	600x1210 mm
Height	870 mm
Mattress	90 mm
ANGLES	
Back Rest Movement	70 °
Seating Mattress Angle	15°
MECHANICAL MOVEMENTS	
Height	✓
Back Rest	✓
Length Adjustable Foot Supports	✓



Blood Sampling Chair 402.K001

The chair provides maximum comfort and support to the patient during blood collection

- Angle Adjustable Armrest
- Swivel or Rotating Feature
- Easy-to-Clean Materials
- Two Arms
- Chromed and painted body options

DIMENSIONS (WxLxH) 450 x600x770 mm



Lighting the Way in Surgery

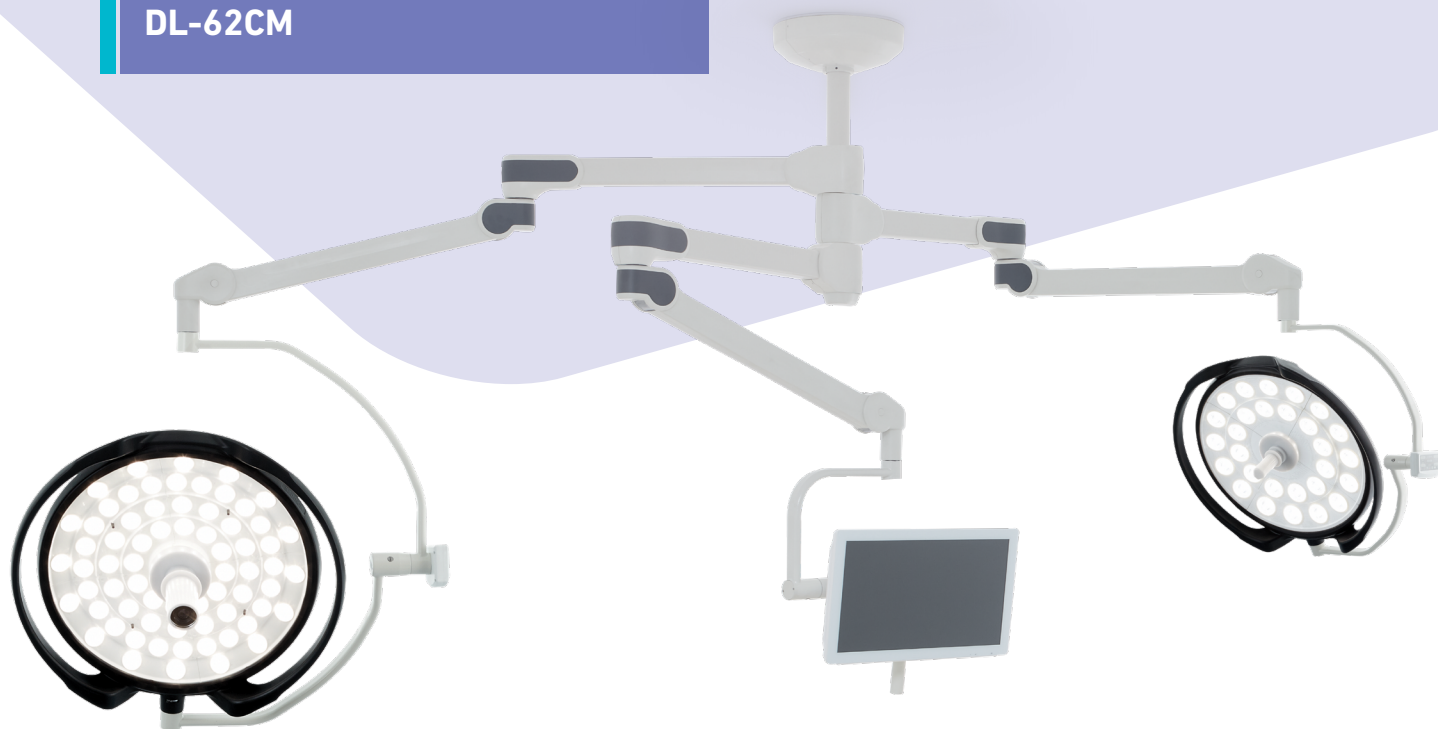
Operating lamps have a unique role among the many tools and equipment utilized in the operating room. Üzümcü operating lamps are the reliable assistant of surgeons in the operating theatre. It provides confidence by maximizing visibility with its advance technology during the surgery.

OPERATING LIGHTS

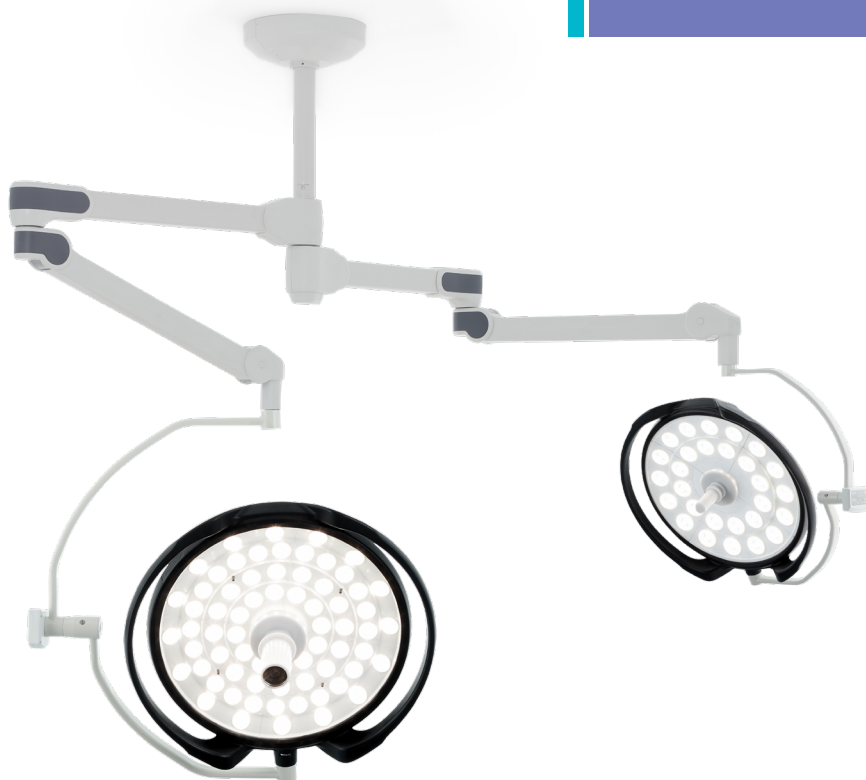




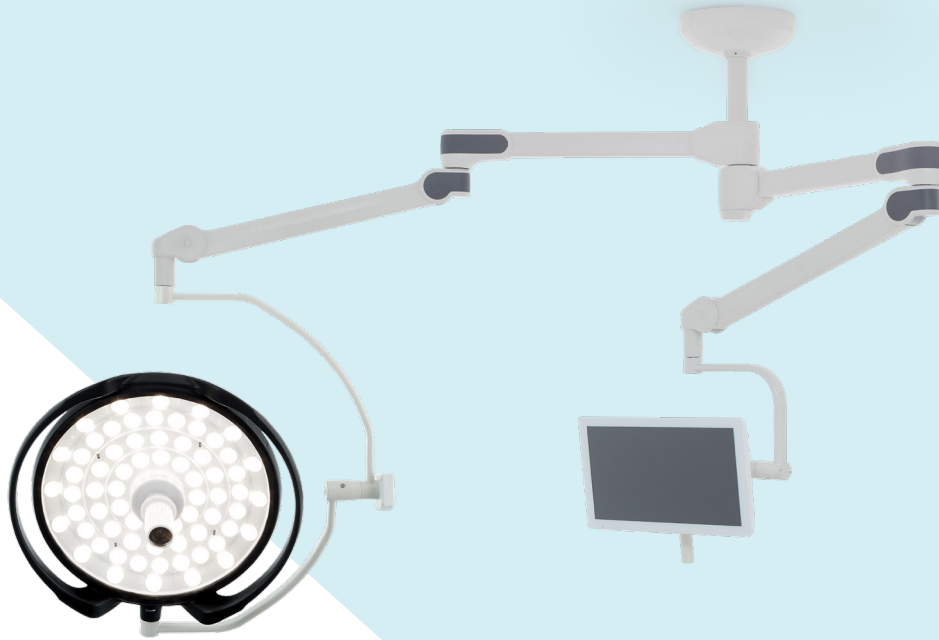
**Triple Arm with Monitor on Arm
DL-62CM**



**Double Arm with Camera
DL-62C**



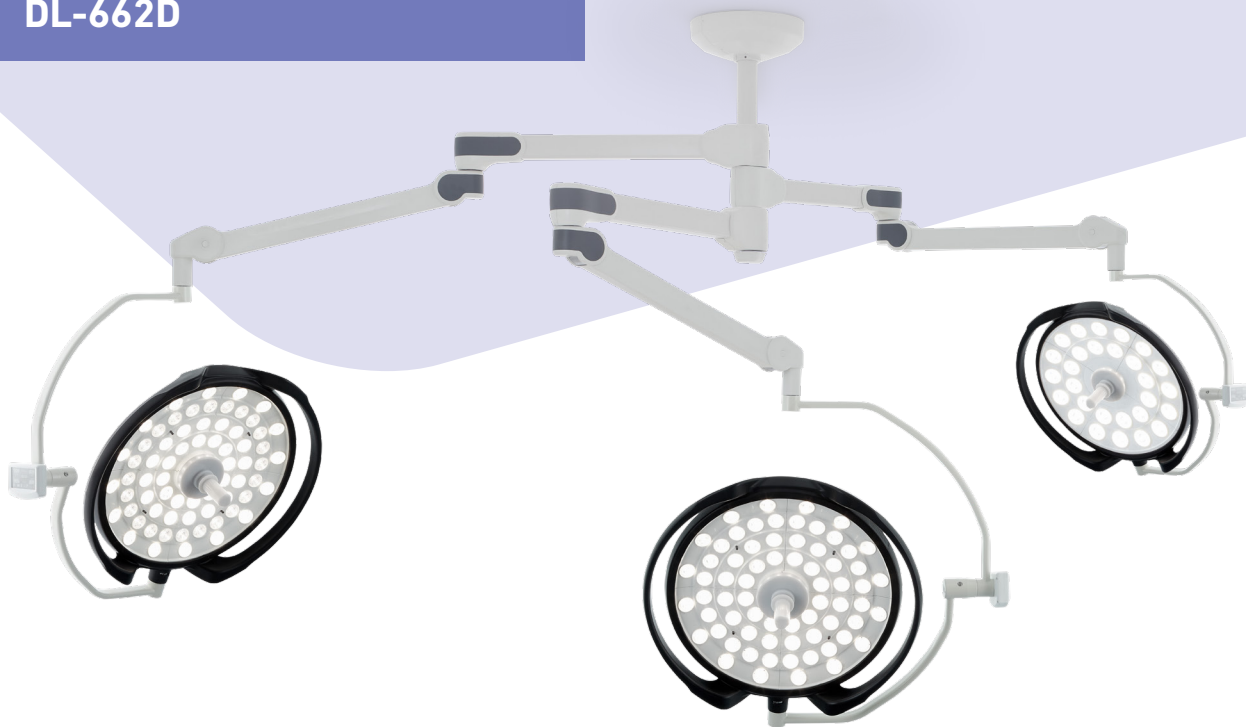
**Double Arm with Monitor & Camera
DL-6CM**



**Double Arm with Monitor on Wall
DL-66CMW**



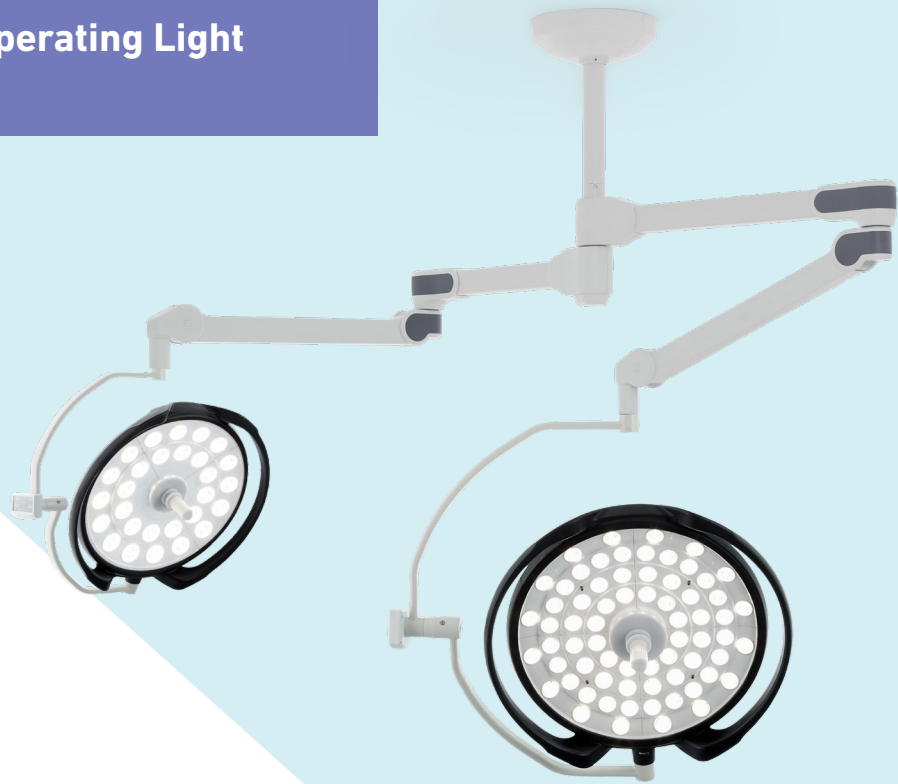
**Triple Head Operating Light
DL-662D**



**Double Head Operating Light
DL-66D**



**Double Head Operating Light
DL-62D**



**Single Head Operating Light
DL-6D**



Single Small Head Operating Light DL-2D



Mobile Operating Light DL-2MB

Battery & Control Panel

Battery system running automatically in case of electricity failure and providing continuous energy for 2,5 hours. Multi-functional control panel for monitoring battery status and adjusting lamp function.

- Illumination power: 120.000 lux
- Battery back up: 2,5 hours
- Dimming range: 1-100%
- Color temperature: 3500 - 5000 K





LED Technology

- High LED technology fulfilling lighting requirements of any kind of operation
- Maximum lighting level by a single button
- LED bulbs of the lamp may be changed individually and have 50.000 hours of lifetime



Slim Head Design

- Head design with low aerodynamic resistance protects the surgical room's laminar flow



Sensor Technology & Endoscopy Mode

- Sensor technology enabling automatic light off of related LED sections and preventing formation of shade on the lighting area when faced with a barrier
- Sustainable functionality for endoscopic and minimally invasive surgical procedures by a single light function (endolight function)
- Adjustable color temperature between 3500-5000 °K
- LCD colour touchscreen control panel controlling all functions



Camera System & Focusing

- Camera and medical monitor practically integrable with the lamp head for training purposes. It enables monitoring and recording operations.



Touch Screen Control Unit

- User friendly 4.3" LCD touch screen unit is used to easily control all functions by tapping and swiping the icons.

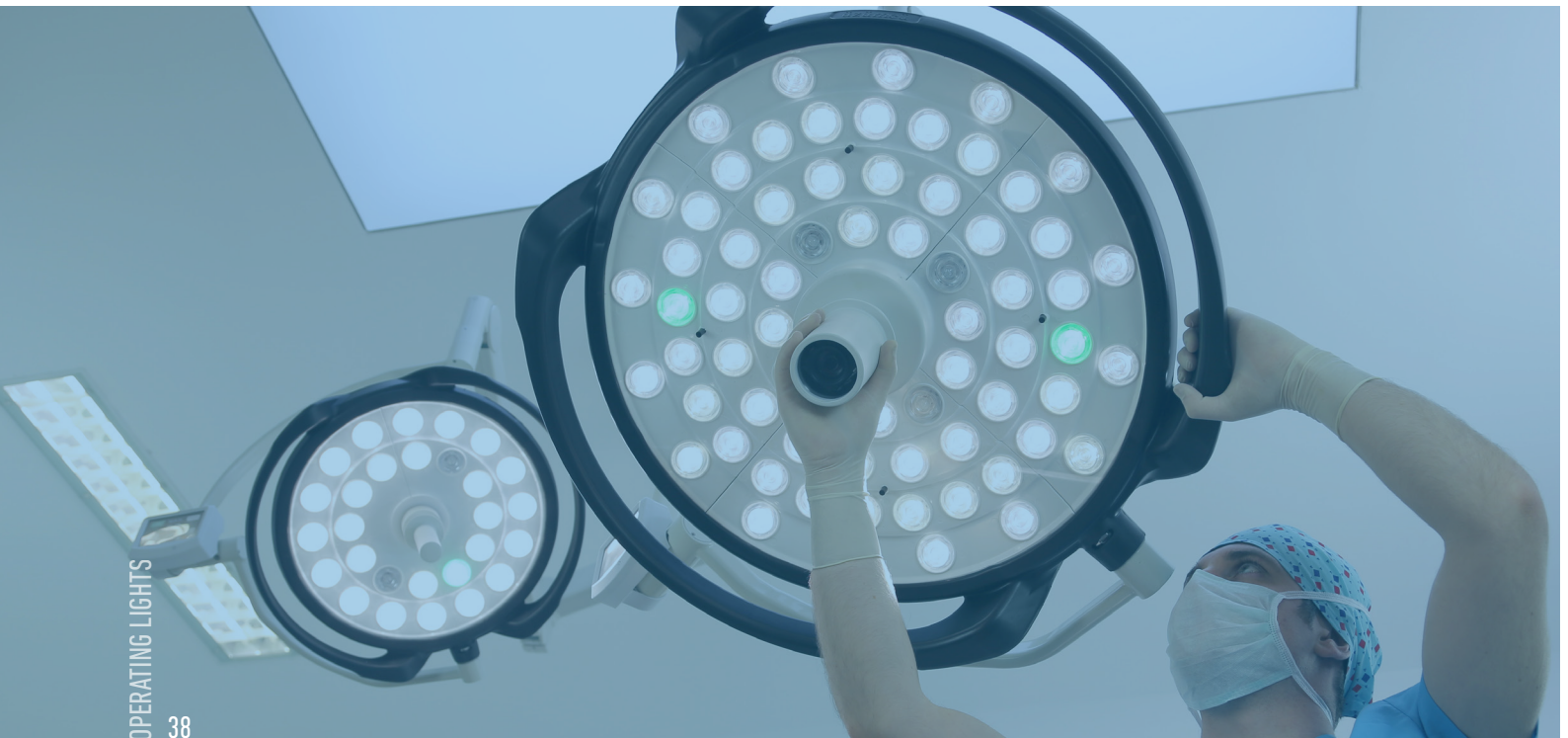
TECHNICAL SPECIFICATIONS

MODEL	MAIN LIGHTHEAD	SATELLITE LIGHTHEAD
Diameter of lighthouse	: Ø650 mm	: Ø440 mm
Illumination power, in 1 m	: 160.000 Lux	: 120.000 Lux
Color temperature	: 3500 K - 5000 K	: 3500 K - 5000 K
Color rendering index, Ra CRI	: 96%	: 96%
Dimming Range	: % 1 – 100	: % 1 – 100
Adjustable focus diameter	: 120 – 300 mm	: 148-162 mm
Temperature increase in surgical area	: < 0,5°C	: < 0,5°C
Number of LED modules	: 68	: 28
Lifetime of LED	: 60.000 hours	: 60.000 hours
Leg Rest Up / Down	: IP 54	: IP 54
Irradiance at nominal illuminance	530W/m ²	

Camera & Monitor

Medical monitor	1080p Full HD
Camera	1080p Full HD 10x optical zoom Autofocus
Additional options	Wall panel, Medical monitor, Camera, UPS

Üzümcü LED operating lights are designed to meet all lighting and viewing requirements of operating theatres. Powerful LED technology with high-tech camera solution helps the surgeons to operate and view the surgery area clearly. Üzümcü LED lights can be adapted in any size of operating theatres including large hybrid types with variety of models & combinations.



Guiding Surgical Mastery: The Power of LED Illumination

Energy Efficiency: LED lights are highly energy-efficient compared to traditional incandescent or fluorescent lights. They consume less power, resulting in lower energy costs and reduced environmental impact.

Longevity: LEDs have an impressive lifespan, lasting up to 60,000 hours. This longevity means that LED surgical lights require fewer bulb replacements, resulting in reduced maintenance and operational costs.

Brightness and Color Accuracy: LED lights produce bright, white light that closely resembles natural daylight. This characteristic enhances visibility during surgery and allows for accurate color representation, making it easier for surgeons to differentiate tissues and organs.

Directional Lighting: LED surgical lights can be designed with adjustable beam angles and spotlights, allowing surgeons to focus light precisely where it is needed. This versatility helps to minimize shadows, improve visibility, and enhance surgical outcomes.

EXAMINATION LIGHT



TECHNICAL SPECIFICATIONS	
Illumination	: 30.000 Lux / 0,4 m
Light Head Diameter	: Ø100 mm
LED Lifetime	: 60.000 hours
CRI	: 95%
Number of LED Modules	: 6
Color Temperature	: 4500 K
Inlet Voltage	: 100 -240 V AC / 50-60 Hz
Dimensions	: ML-70L, 600 mm, ML-45L, 1295 mm, ML-40L, 1745 mm,





LED Technology

- Advanced LED technology to fulfill lighting requirements of any kind of surgery and examination
- Well-focused lighting with LED bulbs connected to specially developed reflector
- The technology does not require maintenance during the bulb's lifetime

Cleaning & Disinfection

- Cleaning and disinfection solution-proof. Flat and smooth surfaces

Customised Production Solutions

- Customised production solutions with mobile and rail type options

Body Structure & Head Design

- Head can be positioned in required area and can be rotated 360-degree thanks to its spiral body structure
- Modern and aesthetics design

“Empower Precision, Higher Precision Faster Healing”

Uzumcu ESU devices combine precision, safety and efficiency to deliver exceptional results for both patients and healthcare professionals.



ELECTROSURGICAL DEVICES

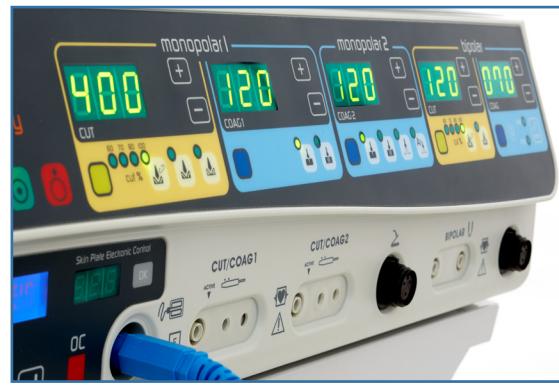




ELECTROSURGICAL DEVICES Model EK-410, EK-250

EK-410 and EK-250 electrosurgical devices with 400 W and 250 W maximum output power options are devices that can be used in all type of surgeries, like general surgery, orthopedics, urology, cardiovascular surgery and neurosurgery with high performance and micro operation technology.

- Cutting Modes at Different Modulation Levels
- LCD Screen for Monitoring Device Functions
- Visual and Audio Alarms
- Vessel Sealing Feature
- Suitable for Synchronized Use of Two Surgeons
- Digital Screen for Monitoring Energy Output Powers
- Bipolar Use Automatic Activation
- Changing of Sound by Operation
- Bipolar Cutting




TECHNICAL SPECIFICATIONS

MONOPOLAR	EK-410	EK-250
Maximum Output Power Pure CUT	400 W - 300 Ω	250 W - 300 Ω
Maximum Output Power Cut-Coag CUT80%	300 W - 300 Ω	220 W - 300 Ω
Maximum Output Power Cut-Coag CUT60%	250 W - 300 Ω	200 W - 300 Ω
Maximum Output Power Cut-Coag CUT40%	200 W - 300 Ω	150 W - 300 Ω
Maximum Output Power Cut ENHANCED	250 W - 300 Ω	150 W - 300 Ω
Maximum Output Power Cut-Coag BLEND	250 W - 300 Ω	150 W - 300 Ω
Maximum Output Power Coag SPEEDY	120 W - 500 Ω	100 W - 500 Ω
Maximum Output Power Coag DEEP	120 W - 200 Ω	100 W - 200 Ω
Maximum Output Power Coag SPRAY	100 W - 2000 Ω	60 W - 2000 Ω
Maximum Output Power Coag SPRAY ARGON	100 W - 2000 Ω	60 W - 2000 Ω
BIPOLAR		
Maximum Output Power Pure CUT	120 W - 50 Ω	120 W - 50 Ω
Maximum Output Power Cut-Coag CUT80%	100 W - 50 Ω	100 W - 50 Ω
Maximum Output Power Cut-Coag CUT60%	100 W - 50 Ω	100 W - 50 Ω
Maximum Output Power Cut-Coag CUT40%	60 W - 50 Ω	60 W - 50 Ω
Maximum Output Power Cut-coag BLEND	120 W - 50 Ω	120 W - 150 Ω
Maximum Output Power Coag COAG	120 W - 50 Ω	120 W - 50 Ω
Vessel Sealing Feature	200 W - 50 Ω	200 W - 50 Ω
Working Frequency Monopolar / Bipolar	425 kHz / 525 kHz	425 kHz / 525 kHz
Selectable Input Voltage	115 - 230 V AC / 50-60 H	115 - 230 V AC / 50-60 H
Dimensions	470 x 380 x 150 mm	470 x 380 x 150 mm


Cutting & Coagulation Types (EK-410 and EK-250)

Monopolar Cutting




Pure cutting by monopolar handle and blend cutting at 60%, 70%, 80% modulation levels

Superficial Blend Cutting




Superficial blend cutting in which cutting function is executed with coagulation function

Deep Blend Cutting




Deep blend cutting in which cutting function is executed with coagulation function

Monopolar Superficial Coagulation




Superficial coagulation in which electrode contacts with tissue

Monopolar Deep Coagulation




Deep coagulation in which electrode contacts with tissue

Spray Coagulation




Spray coagulation in which electrode has no contact with the tissue, micro bleedings are immediately controlled

Bipolar Cutting




Blend cutting executed by bipolar forceps, pure and at 60%, 70%, 80% modulation levels

Coagulation with Bipolar Automatic Activation




Controlled coagulation by automatic start/stop function in bipolar coagulation

Argon Coagulation




Spray coagulation in which micro bleedings are immediately controlled

Bipolar Coagulation



Vessel Sealing



Vessel sealing function in laparoscopic and open surgeries



“Electrocautery Technology for Quick and Precise Cutting”





Cutting & Coagulation Options

- FORZA electrocautery devices can be used in all surgery branches like general surgery, orthopaedics, urology, cardiovascular surgery, and neurosurgery with 400 W and 250 W maximum output power options
- Advanced technology with automatic self-test feature at each start up informs the user about device functions
- Blend cutting modes with pure cutting and at 5 different modulation levels
- Wide, rapid, and non-contact coagulation with spray coagulation mode
- Safe hemostasis by superficial and deep contact coagulation modes



Error Record System

- Controlled coagulation by autostart and autostop functions at bipolar mode
- Suitable for synchronized use of two surgeons at monopolar and bipolar modes in multi operations
- Compatibility with foot switch and manual use
- Record system for monitoring failures of device functions or accessories with their codes, recording 99 failures and providing possibility for rapid technical service by monitoring retrospective failures



Patient Safety System & Memory

- Contact impedance between patient body and return electrode is continuously watched by Skin Plate Electronic Control (SPEC)
- 50 different usage modes can be stored in the memory by pre-programming method, offering possibility for immediate call



Vessel Sealing Function

- Effective and safe sealing process in laparoscopy, open surgery veins and muscles bundles thanks to the vessel sealing function integrated onto cautery device

ELECTROSURGICAL DEVICES EK-160

EK-160 Electrosurgical Device is designed for minor surgeries and polyclinic practices with 160 W maximum output power and monopolar and bipolar functions.

- Pure and Blend Cutting, Superficial and Deep Coagulation
- Automatic System Control at Each Start Up
- Bipolar Coagulation
- Adjustable Power and Sound Levels
- Compatibility with Foot Switch and Manual Use

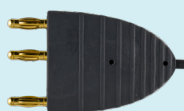


TECHNICAL SPECIFICATIONS

Maximum Output Power Pure CUT	160 W - 250 Ω
Maximum Output Power CUT	120 W - 200 Ω
Maximum Output Power FORCED COAG	100 W - 150 Ω
Maximum Output Power SOFT COAG	80 W - 100 Ω
Maximum Output Power BIPOLAR	60 W - 100 Ω
Working Frequency	600 kHz
Selectable Input Voltage	115 - 230 V AC / 50-60 Hz
Dimensions	254x288x104 mm



ACCESSORIES



Finger-Switch Pencil Reusable

44.1007



Finger-Switch Pencil Disposable

44.1008



Silicone Bipolar Cable 3.0 M
Instrument Connector :

44.1067
Ethicon
Generator Connector:
4mm Banana Plug



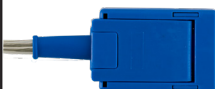
Silicone European Bipolar Cable 3.0 M
Instrument Connector :

44.1039
European
Flat Plug
Generator Connector:
4mm Banana Plug



Silicone Diathermy Cable 3.0 M
Instrument Connector:

44.1081
4mm Male
Fitting
(European Diathermy)
Generator Connector:
4mm Banana Plug

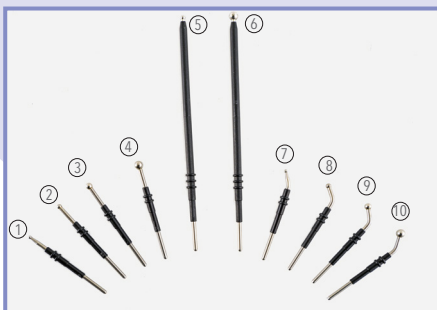


Patient Return Cable 3.0 M

44.1010



ACCESSORIES



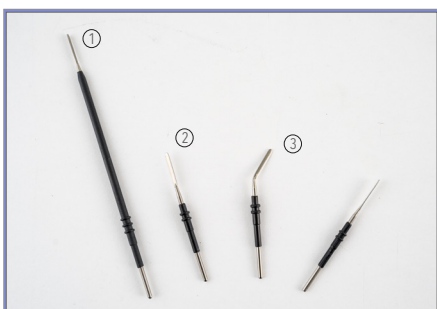
Ball Type Electrodes



Circle & Loop Type Electrodes



Needle Type Electrodes



Blade Type Electrodes



Waterproof Foot Pedals

No.	Ball Type Electrodes	A.Code
1	Dia. 2mm, 7 cm, straight, reusable	44.1071
2	Dia. 3mm, 7 cm, straight, reusable	44.1015
3	Dia. 4mm, 7 cm, straight, reusable	44.1017
4	Dia. 5mm, 7 cm, straight, reusable	44.1070
5	Dia. 3mm, 13 cm, straight, reusable	44.1021
6	Dia. 5mm, 13 cm, straight, reusable	44.1022
7	Dia. 2mm, 7 cm, curved, reusable	44.1027
8	Dia. 3mm, 7 cm, curved, reusable	44.1016
9	Dia. 4mm, 7 cm, curved, reusable	44.1028
10	Dia. 5mm, 7 cm, curved, reusable	44.1018

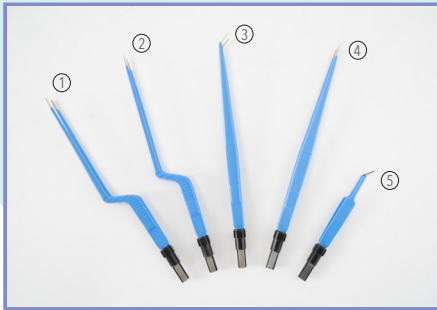
No.	Circle & Loop Type Electrodes	A.Code
1	Circle Loop Electrode 6mm, reusable	44.1159
2	Circle Loop Electrode 8mm, reusable	44.1160
3	Circle Loop Electrode 4mm, reusable	44.1161
4	Loop Electrode 20x20 cm, reusable	44.1025
5	Loop Electrode 10x10 cm, reusable	44.1024
6	Loop Electrode 20x20 cm, reusable	44.1023
7	Conization Electrode 13x15 mm, reusable	44.1026

No.	Needle Type Electrodes	A.Code
1	Needle Electrode 13cm, straight, reusable	44.1019
2	Needle Electrode 7cm, straight, reusable	44.1013
3	Needle Electrode 7cm, curved, reusable	44.1014
4	Fine Needle Electrode 7cm, straight, reusable	44.1145
5	Needle Electrode 7cm, straight, disposable, non-stick	44.1146
6	Needle Electrode 7cm, straight, disposable	44.1147

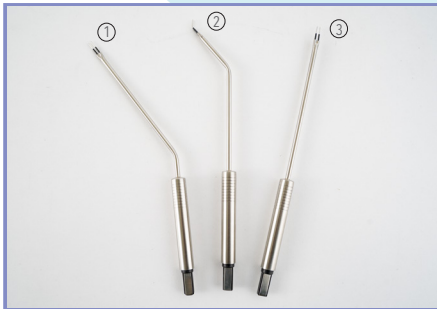
No.	Blade Type Electrodes	A.Code
1	Blade Electrode 15cm, straight, reusable	44.1020
2	Blade Electrode 7cm, straight, reusable	44.1011
3	Blade Electrode 7cm, curved, reusable	44.1012

No.	Waterproof Foot Pedals	A.Code
1	Double Water-Proof Foot-Switch	44.1042
2	Single Water-Proof Foot-Switch	44.1041





Europen Bipolar Forceps



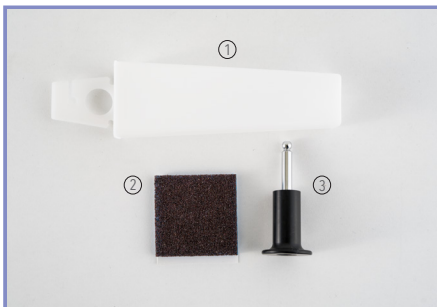
Blade Type Electrodes



Scissors & Artery Sealer / Diathermy Instruments



Patient Return Plates



Other Accessories

No.	Europen Bipolar Forceps	A.Code
1	Dia. 2mm, 20 cm, Bayonet, reusable	44.1032
2	Dia. 1mm, 20 cm, Bayonet, reusable	44.1036
3	Dia. 1mm, 20 cm, angled, reusable	44.1037
4	Dia. 1mm, 20 cm, straight, reusable	44.1034
5	Dia. 0.7mm, 11.5cm, Jeweler, reusable	44.1038
7	Dia. 2mm, 20 cm, straight, reusable	44.1035

No.	Blade Type Electrodes	A.Code
1	Bipolar Electrode, 20 cm, angled, reusable	44.1031
2	Bipolar Electrode, 19 cm, angled 45, reusable	44.1030
3	Bipolar Electrode, 20 cm, straight, reusable	44.1029

No.	Scissors & Artery Sealer	A.Code
1	Bipolar Artery Sealer , 16cm, reusable, non-stick	44.1046
2	Bipolar Artery Sealer , 22cm, reusable, non-stick	44.1047
3	Bipolar Scissor, 18cm, curved, reusable	44.1150
4	Bipolar Artery Sealer, 26cm, reusable, non-stick	44.1044

Diathermy Instruments

5	Wilson Hey Forcept 17.8cm, monopolar male 4mm conn., reusable,	44.1077
6	Artery Forcept 17.8cm, monopolar male 4mm conn., reusable	44.1074

No.	Patient Return Plates	A.Code
1	Monopolar Patient Plate, disposable	44.1009
2	Bipolar Patient Plate, disposable	44.1152
3	Monopolar Patient Plate, 16x12 cm, reusable	44.1153

No.	Other Accessories	A.Code
1	Holster (Electrodes&Pencils)	44.1065
2	Tip Cleaner (Electrodes&Pencils)	44.1066
3	Bipolar Adaptor	44.1040

“New Design, Same Reliability”

Suction Devices are one of the oldest specialty of Üzümcü.
We are proud that more than 20.000 devices work smoothly all around
the world.

SURGICAL SUCTION UNITS





SURGICAL SUCTION DEVICES NOVELA

Novela surgical suction devices are designed for the suction of surgical fluids, gases and other wastes in operation area during and after the surgery. Device creates stable vacuum performance at adjusted vacuum level thanks to its maintenance free oil-less vacuum pump.

- On / Off Button
- Manometer
- Vacuum Level Adjustment Knob
- Jar Switch Button
- Liquid Collection Jars
- Accessory Compartment
- Bumper Base
- Robust and Easy to Clean Main Body
- Antistatic Castors

Jar Capacity	: 3 L - 5 L
Pump	: Oil-free type
Flow Rate	: 60 L/Min
Max. Vacuuming Power	: 680 mmHg
Noise	: Max.55 dB
Vacuum Adjustment	: By Control Knob
DIMENSIONS (WxLxH)	: 450x550x930 H mm



SURGICAL SUCTION DEVICES NOVELA EXTRACTOR

Novela Extractor surgical suction device allows surgical team to control vacuum power instantly by the foot pedal. This helps to maintain the sterile environment by freeing up the hands.

Jar Capacity	: 3 L
Pump	: Oil-free type
Flow Rate	: 60 L/Min
Max. Vacuuming Power	: 680 mmHg
Noise	: Max.55 dB
Vacuum Adjustment	: By Control Knob & Foot Pedal
DIMENSIONS (WxLxH)	: 450x550x930 H mm



SURGICAL SUCTION DEVICES NOVELA THORACIC

Novela Thoracic suction device creates low flow, sensitive suction which allows fluid or air to be sucked out of the chest.

Jar Capacity	: 3 L
Pump	: Oil-free type
Flow Rate	: 8 L/Min
Max. Vacuuming Power	: 680 mmHg
Noise	: Max.55 dB
DIMENSIONS (WxLxH)	: 450x550x930 H mm



SURGICAL SUCTION DEVICES NOVELA LIPOSUCTION

Novela Liposuction device is designed to create stable and high vacuum flow for required operations like cosmetic surgeries.

Jar Capacity	: 3 L
Pump	: Oil-free type
Flow Rate	: 110 L/Min
Max. Vacuuming Power	: 680 mmHg
Noise	: Max.55 dB
DIMENSIONS (WxLxH)	: 450x550x930 H mm



PORTABLE SUCTION DEVICES
PA-2, Portable
PA-2S, Portable with Stand
PA-1R, Portable with Battery

Üzümcü portable suction devices are designed to be used in minor surgical interventions, ICU's, inpatient services, dental operations and ambulances. Ergonomic design and stable high vacuum power makes it very useful in those areas.

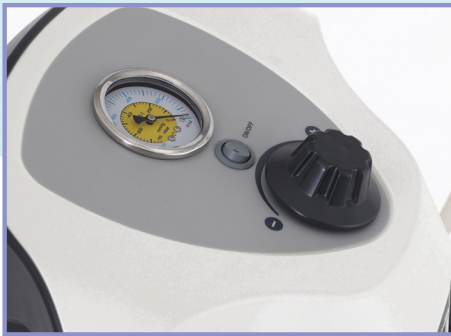
Jar Capacity	: 2 L
Pump	: Oil-free type
Flow Rate	: 22 l/dk
Max. Vacuuming Power	: 0-450 mmHg
Noise	: 45 dBA
Battery Usage	: 45 min (PA-1R)

DIMENSIONS (WxLxH) : 310x450x180 H mm



“Robust & Powerful Devices with Stylish & Ergonomic Design”





Main Body, Pump and Control

- Rapid suction with 60 L/Min flow rate, adjustable vacuum power at 680 mmHg
- Vacuum adjustments by easily accessible control panel and vacuum manometer for monitoring vacuum level
- Maintenance free, silent, non-vibrating, oil free vacuum pump
- Easy to clean, robust body design which is suitable for hospital



Superior Performance

- Our surgical aspirators are engineered with precision and backed by advanced technology to ensure exceptional suction power, enabling efficient removal of fluids, tissues, and debris during surgical procedures.
- Üzümcü Surgical Suction Device family offers a range of models to be used in various surgical specialties, ensuring that healthcare professionals have access to the most appropriate aspirator for their specific needs.



Pump Protection System

- Protective technology preventing overflowing and liquid leakage to pump system by integrated buoy system and hydrophobic filter



Wide Range of Jars

- Collecting jars with scaled body, integrated & easy to carry handle
- 3 L and 5 L capacity options for autoclavable polycarbonate jars

Surgical Suction Jar

- Made of transparent polycarbonate material
- 2 L, 3 L and 5 L carrying capacity alternatives
- Sterilizable jars at 121° C
- Adapter for wall connection
- Integrated hydrophobic filter

34.1373	5L
90.1337	3L

CRYOTHERAPY DEVICE KRY-10S

Üzümçü Cryotherapy Device offers an anaesthesia free treatment by the cryogenic effects of nitrous oxide and carbondioxide gases on surgical areas. Device is suitable for gynecology, dermatology and proctology treatments.

KRY-10S comes with 3 pcs standard probes, cylinder trolley and cylinder.

Standard Probes



CRYOTHERAPY DEVICE KRY-10

Üzümçü KRY-10 cryotherapy device comes with 3 pcs standard probes and transport case.



Probe Options

Alternative probes for different treatments



Pressure Adjustment

Manometer for monitoring the cylinder pressure



“Improvement of Standards in Hygienic Hospital Furniture”

We are proud of extensive collection of stainless steel hospital furniture, designed to meet the specific needs and demands of modern healthcare settings. Stainless steel is renowned for its exceptional strength, durability and resistance to corrosion, making it an ideal material choice for healthcare furniture.

STAINLESS STEEL HOSPITAL EQUIPMENT







**Your Safety in Stainless Care:
Empowering Clean Hands,
Healing Hearts.**

Material: Stainless steel construction to ensure long-lasting performance and easy maintenance.

Multiple Faucets: The unit may have multiple faucets to allow simultaneous handwashing by multiple individuals.

Foot Pedal or Sensor Activation: To minimize hand contact and reduce the risk of contamination, some units may feature foot pedal or sensor-activated faucets.

Splash Guards: Built-in splash guards around the sink to prevent water splashing and maintaining a clean environment.

Soap Dispensers: Integrated soap dispensers to ensure access to handwashing agents for effective cleaning.

Specially designed with round concave corners, easy to clean and antibacterial material considering the areas of use & user's requests and to be compatible with international hygienic norms.



Surgical Scrub Sinks 80600 / 80800

- Photocell and knee controlled water flow
knee controlled soap flow at each station
- Thermostatic mixing valve for cold and hot water
- Touch free control lets the users keep their hand antiseptis in usage
- Made from high quality and durable material
- Multiple basin configurations

Model	Dimensions(WxLxH)	Explanation
80600	680x800x1260 mm	Single
80700	680x1600x1260 mm	Double
80800	680x2200x1260 mm	Triple



- LCD screen displays water temperature and washing time counter



Brush Holder 87025

- 20 brush capacity and made of 304 quality stainless steel
- Sterilizable brush holder
- Wall connection apparatus
- Glass cover

DIMENSIONS (WxLxH) : 95x250x295 mm



Brush Holder 87010

- 18 brush capacity made made of 304 quality stainless steel
- Sterilizable brush holder
- Wall connection apparatus

DIMENSIONS (WxLxH) : 100x130x520 mm

Brush Holder 87030

- Dispenser for keeping disposable brushes
- Three channel body made of 304 quality stainless steel
- Total 30 disposable brush capacity
- Wall connection apparatus

DIMENSIONS (WxLxH) : 95x250x295 mm



Liquid Soap Dispenser 87065

- Elbow controlled stainless steel handle
- Adjustable soap amount
- Wall connection apparatus



Liquid Soap Dispenser 87075

- Photocell controlled
- Adjustable soap amount and long battery life with low energy consumption
- Hygienic anodized aluminium body
- Autoclavable pump system
- Wall connection apparatus

Liquid Soap Dispenser 87050

- Foot pump controlled
- Wall connection apparatus



Instrument and Medicine Cupboard 40506

- Stainless steel production for operating and intervention rooms
- Lockable glass doors
- 3 adjustable shelves
- 4 stainless steel drawers that are easy to open and close
- 4 adjustable feet for floor balance

DIMENSIONS (WxLxH) : 470x900x1800 mm



Instrument and Medicine Cabinet 40500

- Made of 304 stainless steel to be used in operating theatres and intervention rooms
- Lockable glass doors
- 3 adjustable shelves
- 4 adjustable legs for floor balance

DIMENSIONS (WxLxH) : 450x900x1800 mm



Operating Theatre Cabinet 40530

- Made of 304 stainless steel to be used in operating theatres and intervention rooms
- Lockable glass doors and 3 adjustable shelves at top
- Lockable steel doors at bottom
- 4 adjustable legs for floor balance

DIMENSIONS (WxLxH) : 470x900x1800 mm



Bronchoscope Endoscope Cabinet 40890

- 304 quality stainless steel design to store and keep the flexible endoscope systems safe from damages
- Five-piece rail system for easy endoscope hanging
- Inner tray for water collecting
- Lockable glass door

DIMENSIONS (WxLxH) : 480x675x2200 mm

Special for endoscope systems

Specially designed to hang the flexible endoscope systems safely.

Mayo Table, Hydraulic 40410

- Designed by considering areas of use and user's requests, made of 304 quality stainless steel
- Design compatible with international hygiene norms, with rounded concave corners, easy to clean, and antibacterial press print
- Rotatable upper tray independent of foot section
- 3 castors, 2 of them with break
- Adjustable height between 800 - 1200 mm controlled by hydraulic foot switch

DIMENSIONS (WxLxH) : 740x540x800-1200 mm



Mayo Table, Manual 40460

- 304 quality stainless steel production designed by considering the usage areas and user demands
- Manual height adjustment
- Produced in accordance with international norms of hygiene, rounded concave corners, easy to clean, and bacteria free surface with press print
- Rotatable top tray independent of the foot section
- 3 castors, 2 of them with break

DIMENSIONS (WxLxH) : 690x560x1000-1220 mm



Mayo Table, Hydraulic 40420

- 304 quality stainless steel production designed by considering the usage areas and user demands
- Concave corners for easy cleaning
- Rotating top tray
- Hydraulic height adjustment by the foot pedal
- Two-tiered table
- 4 castors, 2 of them with break
- Ø 100 mm Castors

DIMENSIONS (WxLxH) : 700x1100x980-1450 H mm

Instrument Table 40038 / 40095

- Designed for operating and intervention rooms by considering user's expectations, made of 304 quality stainless steel
- Demountable
- 4 castors, 2 of them with break

Model	Dimensions(WxLxH)
40038	450x350x750 mm
40078	500x750x850 mm
40095	650x950x900 mm



Falcate Table 40200

- Made of 304 stainless steel for operating and intervention rooms
- Two shelves in shape of falcate
- Upper tray with barrier
- 6 castors, 3 of them with break

DIMENSIONS (WxLxH) : 450x1700x1000 mm



Medicine Preparation Trolley 40350

- Designed for operating and intervention rooms by considering user's requests, made of 304 quality stainless steel
- Design compatible with international hygiene norms, with rounded concave corners, easy to clean, and antibacterial press print
- Sliding tray for medicine preparation
- 6 drawers with different dimensions

DIMENSIONS (WxLxH) : 550x780x800 mm



Instrument Table with Drawer 40162 / 40172

- Designed for operating and intervention rooms by considering user's requests, made of 304 quality stainless steel
- Design compatible with international hygiene norms, with rounded concave corners, easy to clean, and antibacterial press print
- One drawer and two shelves
- 4 castors, 2 of them with break

Model	Dimensions(WxLxH)
40162	420x620x800 mm
40172	630x720x800 mm

Equipment Trolley 40087 / 40088

- Made of stainless steel
- Designed to be used in operating and intervention rooms
- Handles in both sides for easy to move
- Bumpers on both castors
- 4 castors, 2 of them with break

Model	Dimensions(WxLxH)	Explanation
40087	870x570x950 mm	Double Shelf
40088	870x570x950 mm	Triple Shelf



Equipment Trolley 40086

- Made of stainless steel
- Designed to be used in operating and intervention rooms.
- Integrated 6 fold medicine boxes
- Integrated ABS tray
- Handles in both sides for easy to move
- 2 shelves
- Bumpers on both castors
- 4 castors, 2 of them with break

DIMENSIONS (WxLxH) : 570x870x950 mm

Dressing Trolley 70772

- 304 quality stainless steel production for operation theatres, intensive care units and for all clinics
- Easily opened and closed 4 easy open/close drawers to store all the equipment needed for treatment and dressing
- Carrying handle at each side, rail for accessories
- Removable waste bin and bowl solution
- 4 castors, 2 of them with break

DIMENSIONS (WxLxH) : 580x810x980 mm



Anaesthesia Trolley 40340

- Designed for operating and intervention rooms by considering user's requests, made of 304 quality stainless steel
- Design compatible with international hygiene norms, with rounded concave corners, easy to clean, and antibacterial press print
- One detachable wire basket
- 4 castors, 2 of them with break

DIMENSIONS (WxLxH) : 470x720x1510 mm



Easy to Use

- Contribution to patient therapy with rapid transportation advantage by collecting all medicine and equipment required for anaesthesia process with 5 drawers in different dimensions and four rows of transparent boxes

Working Area

- Optimum area use for devices and equipment with transparent medicine boxes, wire basket, and sliding working tray integrated with the table

Bowl Stands, Single-Double 40575 / 40555

- Made of AISI 304 stainless steel
- Single and double bowl designs available
- Available with lower shelf
- Open frame design allows accessibility from any side
- Optional MR compatibility
- 4 castors, 2 of them with break

Model	Dimensions (WxLxH)	Explanation
40575	870x380x760 mm	Double
40555	870x380x380 mm	Single



Foot Step 40615 / 40630

- Made of stainless steel
- Non-slip, wide surface for easy use



Model	Dimensions(WxLxH)	Explanation
40615	350x600x180 mm	Single step
40620	350x600x260 mm	Single step
40630	550x600x400mm	Double step

Waste Bin 40600 / 40610

- Made of stainless steel to be used in operating and intervention rooms
- 20 L internal capacity (40600)
- 50 L internal capacity (40610)
- Lid and carriage handle
- Rubber coated metal bumper against impacts

Model	Explanation
40600	20 L internal capacity
40610	50 L internal capacity



Sterile Device and Cloth Trolley 40655

- Made of stainless steel, suitable to be used in sterilization units of hospitals
- Lockable and 270 degree openable 2 doors
- 4 castors, 2 of them with break
- Stainless steel pushing arm

DIMENSIONS (WxLxH) : 680x1300x1180 mm



Medical Waste Trolley 40680

- Made of stainless steel to be used in operating and intervention rooms
- 345 L internal capacity with integrated relief valve at the bottom
- 2 doors on top surface
- 4 castors, 2 of them with break

DIMENSIONS (WxLxH) : 560x1165x920 mm



Housekeeping Trolley 40860 / 40862

- Made of AISI 304 stainless steel
- Single, double and triple options
- Metal foot pedals to open the lids
- Special clips for plastic bags
- Lid color options
- 4 castors, 2 of them with break

Model	Dimensions(WxLxH)	Explanation
40860	400x410x920 mm	Single
40861	700x410x920 mm	Double
40862	1000x410x920 mm	Triple



- Durable base tray to support the weight of larger bags



- Single, double and triple basket alternatives are available for different departments of the hospital



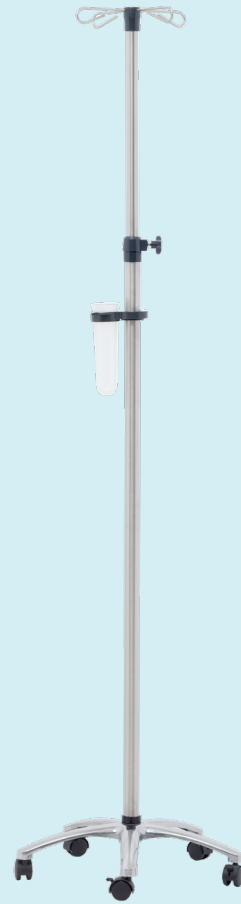
- Hygienic no-touch lid opening by foot pedal

- Lid color options



IV Stand 10315

- Made of stainless steel
- Ergonomic pushing arm for easy transfer
- Accessories basket for storing liquid therapy equipment like serum set, branule
- Infusion devices mountable body structure
- Aluminium base with 5 castors
- Hook height can be adjusted between 1200-2100 mm



IV Stand 10310

- Made of stainless steel
- Hook height can be adjusted between 1200-2100 mm
- 4 hooks to hang serum
- Infusion devices mountable body structure
- Plastic base with 5 castors increasing balance



Ultrasonic Cleaning Unit PM-45 / PM-55

- Made of 304 quality stainless steel to be used in the decontamination areas of sterilization units of hospitals in line with user expectations
- One or two washing sinks depending on user requirements
- Ultrasonic washing section
- 3 cabinets with double doors each
- Faucets with hot & cold water connections for each sink
- Air/water gun with 8 different features

Model	Dimensions(WxLxH)	Explanation
PM-45	600x1800x900 mm	Single sink
PM-55	600x2700x900 mm	Double sink





Air/Water Gun System

- Compressed air/water gun positioned at both sinks, enabling safe decontamination in lumen instruments used during operation



Single Basket & Ultrasonic Washing Technology

- Effective cleaning by ultrasonic wave technology preventing deformation of micro instruments used during operation
- Wire basket with handle facilitating rinse of disinfectants on surgery instruments with its filtering function



Decontamination of Lumen Instrument

- Effective decontamination by air-water gun with 8 different features compatible with all lumen instruments in different scales used in endoscopic and open surgical operations



Single Basket Ultrasonic Washing Technology

- Stainless steel (AISI 304 – EN 1.4301) body and tank
- LCD screen control panel
- Adjustable digital thermostat between 0 – 80 °C
- Adjustable digital timer between 0-99 minutes
- High efficiency with automatic sweep mode operation
- Degas function
- Ultrasonic power adjustment
- Audible warning at the end of the process
- Ultrasonic power: 600W eff/1200W peak
- Frequency: 40 kHz
- Heating power: 1500W
- Sink capacity: 40 lt

Laundry Collection Trolley 40585 / 40590

- Made of stainless steel
- Detachable and washable fabric collection bags
- 4 castors, 2 of them with break

Model	Dimensions(WxLxH)	Explanation
40585	500x550x980 mm	Single bag
40590	500x1100x965 mm	Double bag



Negatoscope 65411 / 65431

- Slim design
- Powerful LED light source
- Single, double and triple versions

Model	Dimensions(WxLxH)	Explanation
65411	490x565 mm	Single
65421	890x555 mm	Double
65431	890x555 mm	Triple



Cap, Bonnet and Mask Cabinet 40395

- Design suitable for entrances of operating rooms and intensive care units
- Six separate divisions with barrier presents cap, bonnet, and masks which are mandatory at the entrance of the operating rooms
- Wide and half opened vertical drawer
- Adjustable 4 legs for floor balance

DIMENSIONS (WxLxH) : 420x660x1550 mm



Slipper Trolley 40390

- Made of stainless steel to be used in operating rooms
- 24 pairs of slipper capacity
- 4 castors, 2 of them with break

DIMENSIONS (WxLxH) : 570x1000x1800 mm



Baby Washing Table 40885

- Made of 304 quality stainless steel designed to be used in new born and infant services by considering user's requests
- One photocell controlled and one manually controlled two separate faucets
- Cabinet with double doors and three drawers
- Baby scale and mattress
- Baby washing sink with dimensions of 500x600x300 mm
- Adjustable 4 legs for floor balance

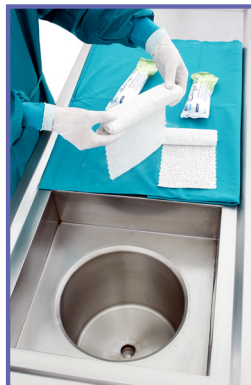
DIMENSIONS (WxLxH) : 650x1650x1055 mm



Plaster Preparation Table with Sink 40845

- Made of 304 quality stainless steel designed to be used in new born and infant services by considering user's requests
- One photocell controlled and one manually controlled two separate faucets
- Cabinet with double doors and three drawers
- Baby scale and mattress
- Baby washing sink with dimensions of 500x600x300 mm
- Adjustable 4 legs for floor balance

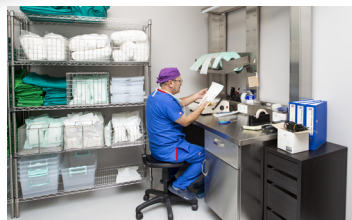
DIMENSIONS (WxLxH) : 680x1600x850 mm



Packaging Table PM-10 / PM-15

- Made of stainless steel
- With drawer (55.1379) and w/o drawer (55.1378) models
- Smooth wide packing surface
- Single tray (55.1379) and double tray (55.1378) models
- 4 castors, 2 of them with break

Model	Dimensions(WxLxH)	Explanation
PM-10	810x1525x865 mm	Double Tray, w/o Drawer
PM-15	700x1500x2000 mm	Single Tray, w Drawer



Packaging Table PM-20 / PM-26

- Stainless steel design to be used in decontamination areas
- 5 electrical sockets
- LED lighting bar on top
- 1 drawer and 1 cabinet with door
- 2 stainless steel wire baskets
- 1 folder holder
- Computer shelf
- Adjustable rubber feet

Explanation	Dimensions(WxLxH)	Explanation
PM-20	725x1525x2070 mm	Adjustable Height
PM-26	725x1525x2070 mm	Fixed

“Safe Storage”

Üzümçü Hospital Carts provides ease of use with its drawers and compartments to store medical equipment while its lock system makes it easy to store safely.

Carts are designed to be robust and easily transportable to cope with all conditions. Wheels and handles provide comfort when transporting medicines.

**HOSPITAL
TROLLEYS**











Emergency Trolley 74403

- Produced by considering user needs in emergency and intensive care areas. The product is ideal for keeping all the equipment needed for immediate treatment
- Integrated plastic separators & baskets in drawers
- Adjustable defibrillator tray integrated to the upper table
- Integrated cylinder holder, IV stand, stainless steel waste bin
- 6 drawers with lock

DIMENSIONS (WxLxH) : 860x520x1060 mm

Model	Article codes	Color
74403-G	55.1410	RAL 6011 Green 
74403-B	55.1409	RAL 5015 Blue 
74403-R	55.1413	RAL 3020 Red 
74403-Y	55.1411	RAL 1018 Yellow 
74403-S	55.1236	RAL 7004 Grey 
74403-W	55.1412	RAL 9010 White 



“Colour Options”

Üzümcü Hospital Trolleys allow individual departments or units to personalise the colours of their trolleys according to their preferences or needs. The colour option helps to find out which area of the hospital the trolleys belong to.







The choice of colour can be hospital specific; there is no universal standard. Use of colour is primarily designed to help healthcare workers quickly identify the purpose or contents of a trolley and contributes to effective patient care.



Medicine Trolley 74303

- Easy to handle & easy to clean
- Trays are available in 50 mm, 100 mm and 200 mm heights
- 4 castors, 2 of them with break
- Accessories: IV stand, glove tray and waste bin
- 6 drawers model has integrated plastic separators & baskets in drawers

DIMENSIONS (WxLxH) : 900x650x1030 mm







Model	Article codes	Color
74303-G	55.1405	RAL 6011 Green 
74303-B	55.1409	RAL 5015 Blue 
74303-R	55.1408	RAL 3020 Red 
74303-Y	55.1406	RAL 1018 Yellow 
74303-S	55.1237	RAL 7004 Grey 
74303-W	55.1407	RAL 9010 White 



Dressing Trolley 74202

- Aluminum mainframe
- Easy to handle & easy to clean
- Trays are available in 50 mm, 100 mm and 200 mm heights
- 4 castors, 2 of them with break
- Accessories: medicine boxes, sharp container

DIMENSIONS (WxLxH) : 635x530x1620 mm

Model	Article codes	Color
74202-G	55.1417	RAL 6011 Green 
74202-B	55.1416	RAL 5015 Blue 
74202-R	55.1420	RAL 3020 Red 
74202-Y	55.1418	RAL 1018 Yellow 
74202-S	55.1099	RAL 7004 Grey 
74202-W	55.1419	RAL 9010 White 



Medicine Cabinet 74032 / 74040

- Aluminum rigid mainframe
- 8 rows medication drawers with lock
- Total 40 pcs (55.1382) or 32 pcs (55.1383) medication drawers
- Adjustable medication drawer separators enable modular and efficient usage
- Central lock system
- 2 options with stainless steel and powder coated
- 4 castors, 2 of them with break

Explanation	Dimensions(WxLxH)	Article codes
32 unit	460x700x1030 mm	55.1382
40 unit	460x700x1030 mm	55.1383

MEDICATION DRAWERS

Explanation	Dimensions(WxLxH)	Article codes
Shelf	60x292x72mm	55.1384
Shelf	60x292x112mm	55.1385
Divider	80 mm	55.1386
Divider	120 mm	55.1387



Mobile Medicine Shelf 74045

- Stainless steel mainframe
- Mobility for optimized needs
- Adjustable drawer angles for easy use
- Various options with separators and baskets
- 4 castors, 2 of them with break
- 45 unit

DIMENSIONS (WxLxH) : 860x520x1060 mm

Hydraulic Stools

- Hydraulic height adjustment
- PU seat
- Ergonomic
- Reinforced and plastic star base options
- Optional lower stools with min 510 mm and max 700 mm heights



Optional foot-controlled stool



Explanation	H(MIN-MAX)	Article codes
Plastic Base Hand Controlled	510-700 mm	90.1587
Chromed Base Hand Controlled	510-700 mm	90.1588
Chromed Base Foot Controlled	510-700 mm	90.1589



Explanation	H(MIN-MAX)	Article codes
Plastic Base Hand Controlled	510-700 mm	90.1590
Chromed Base Hand Controlled	510-700 mm	90.1591
Chromed Base Foot Controlled	510-700 mm	90.1592



Explanation	H(MIN-MAX)	Article codes
Plastic Base Hand Controlled	510-700 mm	90.1593
Chromed Base Hand Controlled	510-700 mm	90.1594
Chromed Base Foot Controlled	510-700 mm	90.1595



Explanation	H(MIN-MAX)	Article codes
Plastic Base Hand Controlled	510-700 mm	90.1596
Chromed Base Hand Controlled	510-700 mm	90.1597
Chromed Base Foot Controlled	510-700 mm	90.1598





Explanation	H(MIN-MAX)	Article codes
Constant Base Hand Controlled	525-700 mm	90.1599



Explanation	H(MIN-MAX)	Article codes
Constant Base Hand Controlled	760-885 mm	90.1600



55.1388
55.1389



55.1390
55.1391

Kidney Trays and Bowls

- Made of stainless steel

Explanation	Dimensions(WxLxH)	Article codes
Tray with Lid	220x320x45 mm	55.1399
Tray with Lid	220x320x45 mm	55.1389

Explanation	Dimensions(WxLxH)	Article codes
Kidney Bowl Small	250 mm	55.1390
Kidney Bowl Large	300 mm	55.1391

Trommels

- Made of stainless steel
- Suitable for sterilization

Dimensions(LxH)	Article codes
150x190 mm	55.1392
190x190 mm	55.1393
240x240 mm	55.1394
290x240 mm	55.1395
320x240 mm	55.1396
360x240 mm	55.1397
390x240 mm	55.1398



Morgue Unit MRG-10 / MRG-15

- Double and triple versions
- Front way loading
- Made of stainless steel
- Independent cooling systems for each cabin

Temperature Scale	: -5/+10°C
Operation Temperature	: +2/+4°C
Power	: 800-1600 W
Illumination	: 36 W floresan
Defrost	: Full automatic
Air Flow	: Fan controlled
Temperature Isolation	: PU isolation
Voltage	: 220-240 V/50-60 Hz

Model	Dimensions(WxLxH)	Article codes
MRG-10	2500x870x1670+320 mm	Double
MRG-15	2500x870x2300+320 mm	Triple



Autopsy Table MRG-30

- Made of stainless steel
- Vacuum system operates with water
- Compressed air and water spray gun
- Garbage grinder (optional)
- Two integrated electric sockets

DIMENSIONS (WxLxH) : 2800x900x900 mm



Body Washing Table MRG-20

- Made of stainless steel
- Top tray is designed for easy draining
- Integrated cabinet

DIMENSIONS (WxLxH) : 2000x900x920 mm



Lift for Morgue MRG-50

- Made of stainless steel
- Designed to lift the corpse to 2nd and 3rd floor cells
- Designed to be easily guided by pushing handle
- 4 castors, 2 of them with break
- Manual hydraulic lift system

DIMENSIONS (WxLxH) : 2130x620x395-1700 mm





Headquarters & Factory
Ođulbey Mah. 3058 Cad. No:2
06830 Gölbaşı / Ankara, TÜRKİYE

İstanbul Region Headquarters
Oruç Reis Mah.
Tekstilkent Ticaret Merkezi
G2 Blok, No: 29
Esenler / İstanbul, TÜRKİYE

t: +90.312.615 53 53

f: +90.312.615.53 90

www.uzumcu.com.tr