



 **UZUMCU**
MEDICAL EQUIPMENT

Surgical Perfection
www.uzumcu.com.tr

Table of contents

04-31

OPERATING TABLES

Operating Tables	04
Operating Table Accessories	22
Gynecological Table	28

32-43

OPERATING LIGHTS

Operating Lights	32
Examination Lights	42

44-61

ELECTROSURGICAL DEVICES & SUCTION UNITS

Electrosurgical Devices	44
Electrosurgery Accessories	51
Surgical Suction Units	54
Portable Suction Devices	58

62-73

STAINLESS STEEL HOSPITAL EQUIPMENTS

Scrub Sink	65
Brush Holder	66
Liquid Soap Dispenser	67
Mayo Table	68
Instrument Table	69
Falcate Table	69
Anaesthesia Trolley	70
Housekeeping Trolley	71
Emergency Trolley	72
Dressing Trolley	72
Medicine Trolley	73
IV Stand	73

74-80

MEDICAL CARTS

Ecg Cart	76
Endo Cart	77
Main Part	78
Equipment Carts Accessories	79

“Technical superiority achieved by more than 55 years of experience”

With its advanced technical infrastructure, Üzümcü produces operating tables in various systems suitable for many surgical disciplines.

Üzümcü offers electro-hydraulic, electro-mechanical and fully mechanical operating tables for the needs of various requirements and surgical environment.

OPERATING TABLES



OPERATING TABLE OP-4P

Üzümcü OP-4P is a new generation electro-hydraulic table. Powerful and robust hydraulic systems increase the effectiveness of surgical operations by addressing the needs of patients and surgeons.

- Safe patient positioning
- Optimum X-Ray transmittance
- Modular design
- Highly resistant body
- Positioning with hand, body control
- Telescopic height adjustment
- Rapid mobilization
- Conductive castors with central locking system
- Optional visco mattress
- 450 kg carrying capacity



OPERATING TABLE OM-6N

The third generation Üzümcü OM-6N table is one of the most advanced electro-mechanical table in the field. It has 360 kg capacity with maintenance-free actuators and has a new advanced hand remote controller.

- Safe patient positioning
- Optimum X-Ray image quality
- Modular design
- Highly resistant body
- Positioning with hand, body control
- Manual height adjustment for kidney elevation, located in the back rest 2-sections area
- Rapid mobilization
- Central locking system
- Optional visco mattress
- CPR position key



OM-780 2 Function Foot Pedal
(optional)



OM-790 Wireless 4 Function Hand
Controller (optional)



OPERATING TABLE OP-2P

Üzümcü OP-2P is an advanced new generation electro-mechanical operating table. It offers high mobility in & out of surgical area with its 125 mm heavy duty medical castors.

- Safe patient positioning
- Positioning with hand, body control
- Manual height adjustment for kidney elevation, located in the back rest 2-sections area.
- Rapid mobilization
- 125 mm conductive castors with central locking system



OPERATING TABLE OM-5F

The third generation Üzümcü OM-5F table is one of the most advanced electro-mechanical table in field. It has 360 kg capacity with maintenance-free actuators and has a new advanced hand remote controller.

- Safe patient positioning
- Optimum X-Ray image quality
- Modular design
- Highly resistant body
- Positioning with hand, body control
- Rapid mobilization
- Central locking system



OPERATING TABLE OM-2M

Üzümcü OM-2M operating table is an advanced fully mechanical operating table. It has all functions of general surgery tables and doesn't require any electric power for any of its movements. This makes the table suitable for any kind of surgery in any field including disaster recovery.

- Safe patient positioning
- Optimum X-Ray image quality
- Modular design
- Highly resistant body
- Optimal clearance in surgical area
- Telescopic height adjustment
- Optional visco mattress



MODEL	OP-4P	OP-2P
SIZES		
Width x Length	2200x610 mm (± 30)	2200x610 mm (± 30)
Height (min) (min - with mattress)	670 mm	820 mm
Height (max) (max - with mattress)	1090 mm	1220 mm
Sliding Movement	300 mm	300 mm
Max Patient Weight	450 kgs	360 kgs
ANGLES		
Lateral Tilt Movement	+20°/-20°	+20°/- 20°
Back Rest Movement	+80°/-45°	+90°/- 35°
Trendelenburg	+30°	+25°
Reverse Trendelenburg	-30°	-25°
Leg Rest Up / Down	+30°/-85°	+30°/-90°
Leg Rest Parallel Movement	80°	80°
Head Rest Movement	+30° / - 90°	+40° / -80°
Kidney Surgery Position	135°	135°
Flex / Reflex Position	+225° / -100°	+215° / -90°
ELECTRICAL MOVEMENTS		
Height	√	√
Back Rest	√	√
Trendelenburg	√	√
Reverse Trendelenburg	√	√
Lateral Tilt	√	√
Sliding	√	√
MECHANICAL MOVEMENTS		
Head Rest	√	√
Kidney Surgery Position	√	√
Leg Rests, Up / Down	√	√
Leg Rests, Right / Left	√	√
Central Locking	Electrical	√
OPTIONALS		
Visco Mattress	NA	√
Wireless 4 Function Hand Controller OM-790	NA	√
2 Function Foot Pedal OM-780	NA	√

*Tolerance values: ±5% for angles and ±25 mm for measurements



OM-6N	OM-5F	OM-2M
2200x610 mm (± 30)	2200x610 mm (± 30)	2200x610 mm (± 30)
820 mm	810 mm	735 mm
1220 mm	1210 mm	985 mm
300 mm	300 mm	NA
360 kgs	360 kgs	220 kgs
+20° / -20°	+20° / -20°	+30° / -30°
+90° / -35°	+90° / -35°	+70° / -35°
+25°	+25°	+40°
-25°	-25°	-20°
+30° / -90°	+30° / -90°	+30° / -90°
80°	80°	80°
+40° / -80°	+40° / -80°	+40° / -80°
135°	Optional	Optional
+215° / -90°	+215° / -90°	+215° / -110° (mechanic)
		MECHANICAL MOVEMENTS
✓	✓	✓
✓	✓	✓
✓	✓	✓
✓	✓	✓
✓	✓	✓
✓	NA	NA
✓	✓	✓
✓	NA	NA
✓	✓	✓
✓	✓	✓
✓	✓	✓
NA	NA	NA
✓	NA	NA
✓	NA	NA





Maximum comfort in
the operating theatre



HEALING BEGINS WITH ADVANCED SOLUTIONS



Functional Design

- Modular design taking shape by different surgical operations with high stability
- Solutions ensure reaching the position required for any kind of surgical operation with its wide range of accessory options
- Telescopic body specifications enabling height adjustment at different levels
- Wheel system which is made of ABS plastic, with high multi-directional mobility and 125 mm in diameter (OM Series)



Sliding

- Image reception ability in a wide area without disturbing the sterile environment with the fluoroscopy device by its sliding feature within 300 mm on horizontal plane



Optimal Clearance In Surgical Area

- Maximum surgical area visibility with its kidney elevator, integrated on the table and adjustable up to 300° (120 mm)



Different Mattress Options

- Compact material table top with high X-Ray permeability that allows high-quality image reception
- Visco or polyurethane mattress options that ensure the patient's comfort by taking its body shape, thus preventing decubitus prophylaxis
- Advanced hygiene conditions thanks to compact material base with polyurethane moulding



Modular Design

- Design that can get different angles according to the type of surgery, demountable head and foot plates
- Unlimited perineal accessibility with demountable foot plate





Easy Approach for C-Arm

- Complete access to all table areas and its X-Ray permeable table top allow high image quality
- Suitable base structure for easy access and approach of the C-arm scopy and surgical microscopes



Accessory Positioning and Battery System

- Stainless steel rail attachment system integrated on both sides of the table, enabling accessory mounting without removing existing accessories
- Possibility of positioning the table in case of electricity cuts thanks to the rechargeable battery system that guarantees thirty movements



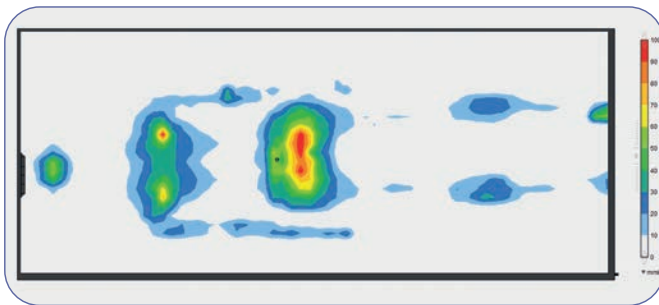
T-Base Specifications

- T-Base enables table optimal approach for the surgical team and equipment
- 316 quality stainless steel body resistant to fractures and corrosion
- Silent and nonvibrating operation



Multi Control System

- Multi control system with hand set and body control panel
- Rapid recall in case of need by storing five different surgery positions
- Position reset by a single button
- Easy use in endosurgery operations thanks to the illuminated screen



Optimum Mattress Performance

- Üzümcü operating table mattresses are designed and manufactured according to the Pressure Mapping test results.

OPERATING TABLE POSITIONS



Trendelenburg Position



Reverse Trendelenburg Position



Left Lateral Tilt Position



Right Lateral Tilt Position



Reflex Position



Flex Position



Chest (Breast) Surgery Position



Struma Surgery Position



Chest Surgery Position



Anaesthesia Preparation and General Surgery Position



Bariatric Laparoscopic Surgery Position



Kidney, Sternum Surgery Position





Kidney Surgery Position



Ophthalmology Position



Orthopedic Fracture Surgery Position



Spinal, Proctologic Surgery Position



Spinal Surgery Position



Neurosurgery Position



Neurosurgery Position



Neurosurgery Position



Arthroscopic Knee Surgery Position



Meniscus Surgery Position



Gynecologic and Urologic Surgery Position

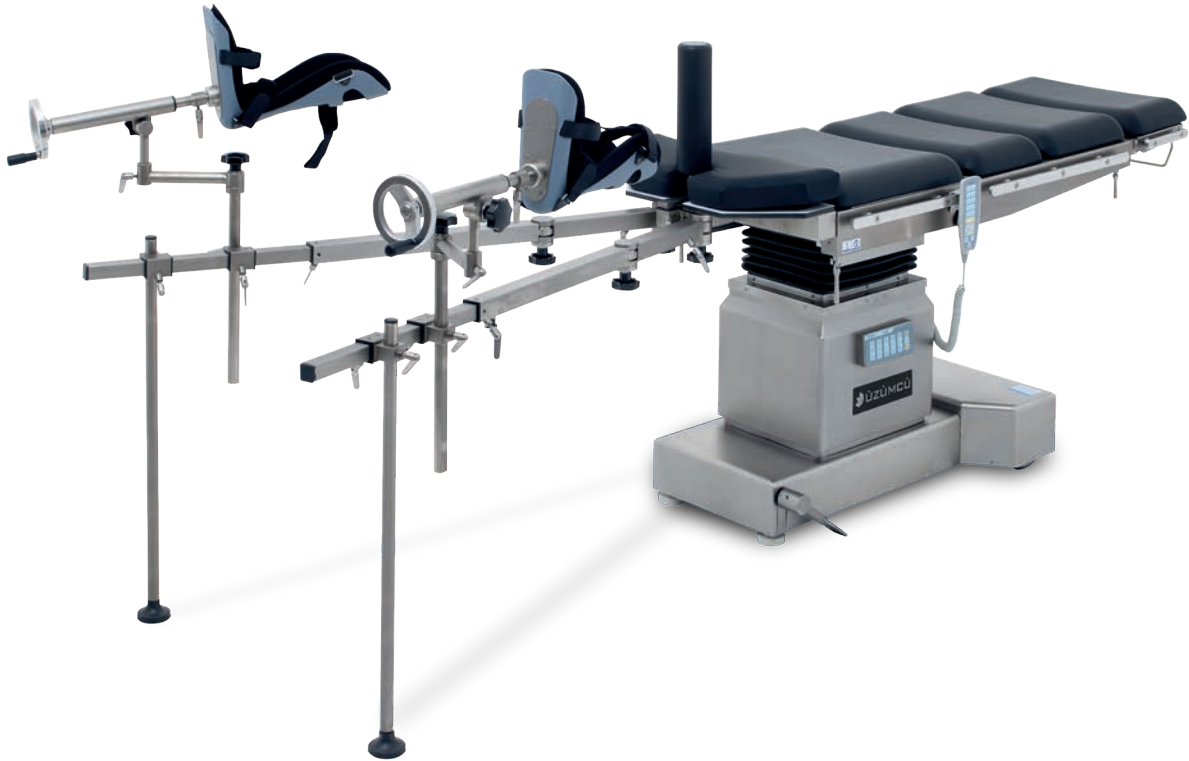


Gynecologic, Urologic, Colorectal Surgery Position

ORTHOPEDIC TRACTION SET OM-520

- Orthopedic traction set is suitable for use with all Üzümcü operating tables in orthopedic surgeries
- Made of 304 quality stainless steel
- Leg strainer function by mechanical lever
- Traction boots with up & down movement and rotation capability around its own axis

DIMENSIONS (WxLxH) : 1710x590x270 mm



ORTHOPEDIC TRACTION SET ACCESSORY TROLLEY OM-550

DIMENSIONS (WxLxH) : 700x600x900 mm



NEUROSURGERY HEAD REST & HORSESHOE HEAD REST OM-285

- Neurosurgery head rest especially designed for use in neurosurgery operation.
- Extremely durable and rigid construction from aluminum alloy
- 3 pcs fixing system with pins and completely adjustable skull clamps
- Adjustment mechanism from 4 different points
- Easily mountable horse shoe head rest accessory

DIMENSIONS (WxLxH) : 420x610x360 mm



LEG POSITIONING BOOT OM-600

- An accessory designed for use in branches that require leg positioning
- Positioning system with one hand control and self-brakes
- Suitable for bariatric and obstetric surgeries

DIMENSIONS (WxLxH) : 1000x510x310 mm



PEDIATRIC PLASTER TABLE OM-555

Designed for pediatric plaster cast procedures in operating rooms and intervention rooms.

- Designed to be used for pelvi pedal plaster applications
- Suitable for adjust various height and length

DIMENSIONS (WxLxH) : 860-520x1010x320-400 mm



OPERATING TABLE ACCESSORIES

ARTHROSCOPY SHOULDER SUPPORT OM-340

- Designed for arthroscopy procedures and compatible with all operating tables
- 7 stage back rest adjustment
- Head fixing section with up & down movement
- Special design offering easy reach to shoulder area
- Body fixing strap

DIMENSIONS (WxLxH) : 560x640x900 mm



RADIOLUCENT SPINE FRAME OM-105

- Designed for use in arthroscopy operations and suitable for use with all tables
- 7 stage back rest adjustment
- Head fixing section with up & down movement
- Special design offering easy reach to shoulder area
- Body fixing strap

DIMENSIONS (WxLxH) : 500x750x250 mm





OM-120 Arm Support
OM-152 Hand-Wrist Strap



OM-100 Anaesthesia Screen



OM-110 IV Stand



OM-150 Body Strap



OM-220 Geopel Knee Crutch
(Pair)



OM-380 Irrigation Bowl



OM-300 Cross Bar



OM-405 Clamp



OM-390 Clamp

OPERATING TABLE ACCESSORIES



OM-355 Carbonfiber
Extension Board



OM-135 Shoulder / Lateral Support



OM-200 Foot Support



OM-310 Proctological
Accessories



OM-155 Foot-Wrist Strap



OM-255 Extension Leg Plate,
Single



OM-330
X-Ray Cassette Holder and Tray



OM-995 Accessory Trolley

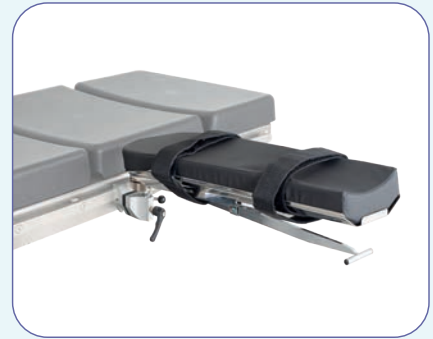




OM-345 Knee Arthroscopy Support



OM-265 Spine Surgery Positioning Frame



OM-295 Arm Rest Adjustable



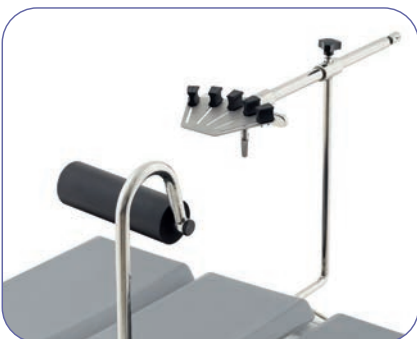
OM-270 Ophthalmologic Head Support



OM-610 Arthroscopic Leg Holder System



OM-215 Arm Rest For Lateral Patient Positioning



OM-275 Weinberger Hand Traction Set



OM-710 Side Rails



OM-385 Rinsing Bowl, Rectangular

OPERATING TABLE ACCESSORIES



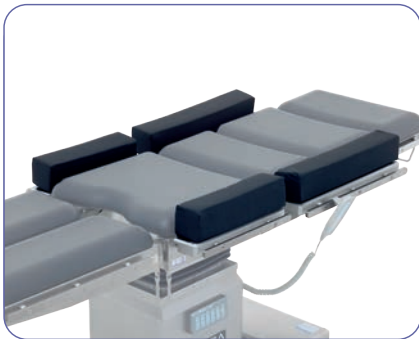
OM-240 Knee Arthroscopy Support



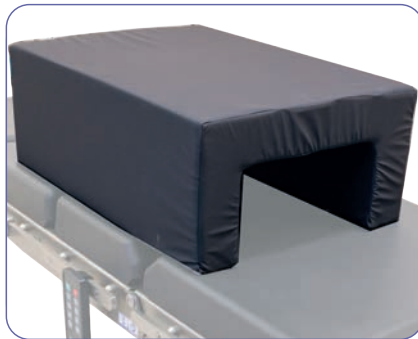
OM-250 Meniscus Positioning Roll



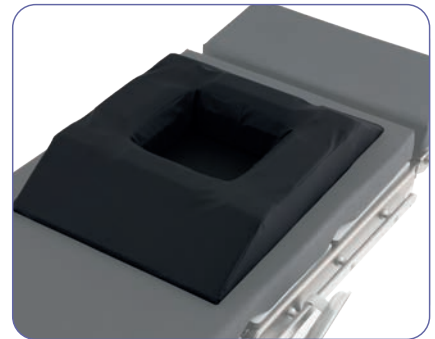
OM-365 Arm Surgery Plate



OM-700 Bariatric Extenders



OM-465 Tunnel Cushion



OM-140 Chest Support

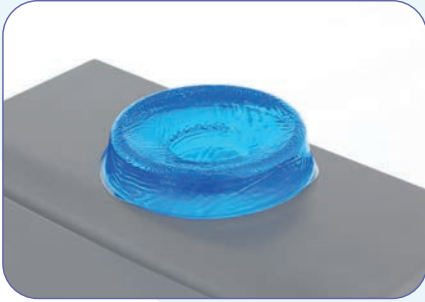


OM-446 Spinal Surgery Cushion with Silicone



OM-460 Mattress, Adult, Gel
OM-450 Mattress, Pediatric, Gel

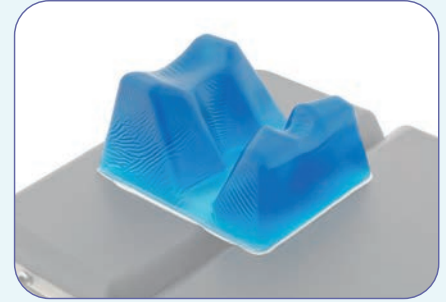




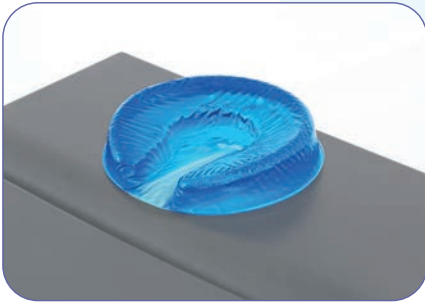
OM-430 Head Rest, Gel
OM-432 Head Rest, Gel, Pediatric



OM-431 Head Rest, PU
OM-433 Head Rest, Pediatric, PU



OM-415 Prone Head Support



OM-410 Horseshoe Head Rest, Gel
OM-412 Horseshoe Head Rest, Gel, Pediatric



OM-411 Horseshoe Head Rest, PU
OM-413 Horseshoe Head Rest, Pediatric, PU



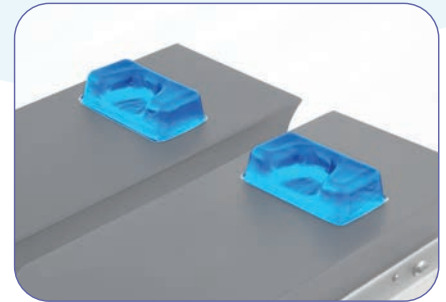
OM-420 Arm Rest, Gel



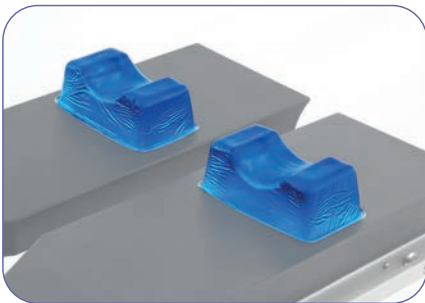
OM-440 Chest Cushion, Gel
OM-442 Chest Cushion, Gel Pediatric



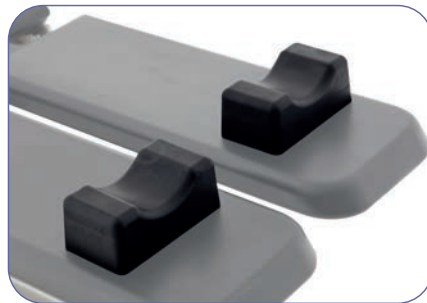
OM-441 Chest Cushion, PU



OM-425 Heel Rest, Gel



OM-428 Foot Wrist Rest, Gel



OM-429 Foot Wrist Rest, PU



OM-445 Silicon Lateral Position Support

GYNECOLOGICAL TABLE JM-4F

Üzümcü JM-4F Gynaecological Table is a new generation, functional examination table with its stylish design.

- Hygienic condition and patient comfort. It can be easily cleaned in accordance with hospital decontamination
- Ergonomic examination
- Height adjustment and trendelenburg position
- Manually controllable back section
- Easily replaceable leg and foot rest accessories can be used for different gynecological operations
- Durable steel body with anti-bacterial ABS cover
- Hidden casters

Color options



MODEL	JM-4F
SIZES	
Width x Length	650x1320 mm
Height (min)	540 mm
Height (max)	840 mm
Lifting Capacity (max)	180 kgs
ANGLES	
Back Rest Movement	45°
Trendelenburg	20°
MECHANICAL MOVEMENTS	
Height	✓
Back Rest	✓
Trendelenburg	✓
DIMENSIONS	
Packing Dimensions	740x1440x860 mm



Foot Support
(Optional)

MANUAL GYNECOLOGICAL EXAMINATION TABLE JM-1A

JM-1A is a fully mechanical examination table.
It has functional drawers and cabinets to keep examination area tidy.

- The special functional design of the Üzümcü manual examination table can fulfill all the requirements of gynecological examination
- The drawers are designed to medical standards to help contain spills and improve infection control
- Length adjustable foot supports
- Easy to use drawer
- Back support
- Step drawer

Color options

-  Aqua
-  Cream
-  Green
-  Burgundy



MODEL	JM-1A
SIZES	
Width x Length	600x1210 mm
Height	870 mm
Mattress	90 mm
Gross Weight	105 kgs
ANGLES	
Back Rest Movement	70 °
Seating Mattress Angle	15°
MECHANICAL MOVEMENTS	
Height	✓
Back Rest	✓
Length Adjustable Foot Supports	✓
DIMENSIONS	
Packing Dimensions	740x1440x1050 mm



BLOOD SAMPLING CHAIR 402.K001

The chair provides maximum comfort and support to the patient during blood collection

- Angle Adjustable Armrest
- Swivel or Rotating Feature
- Easy-to-Clean Materials
- Two Arms
- Chromed and painted body options

DIMENSIONS (WxLxH) : 450 x600x770 mm



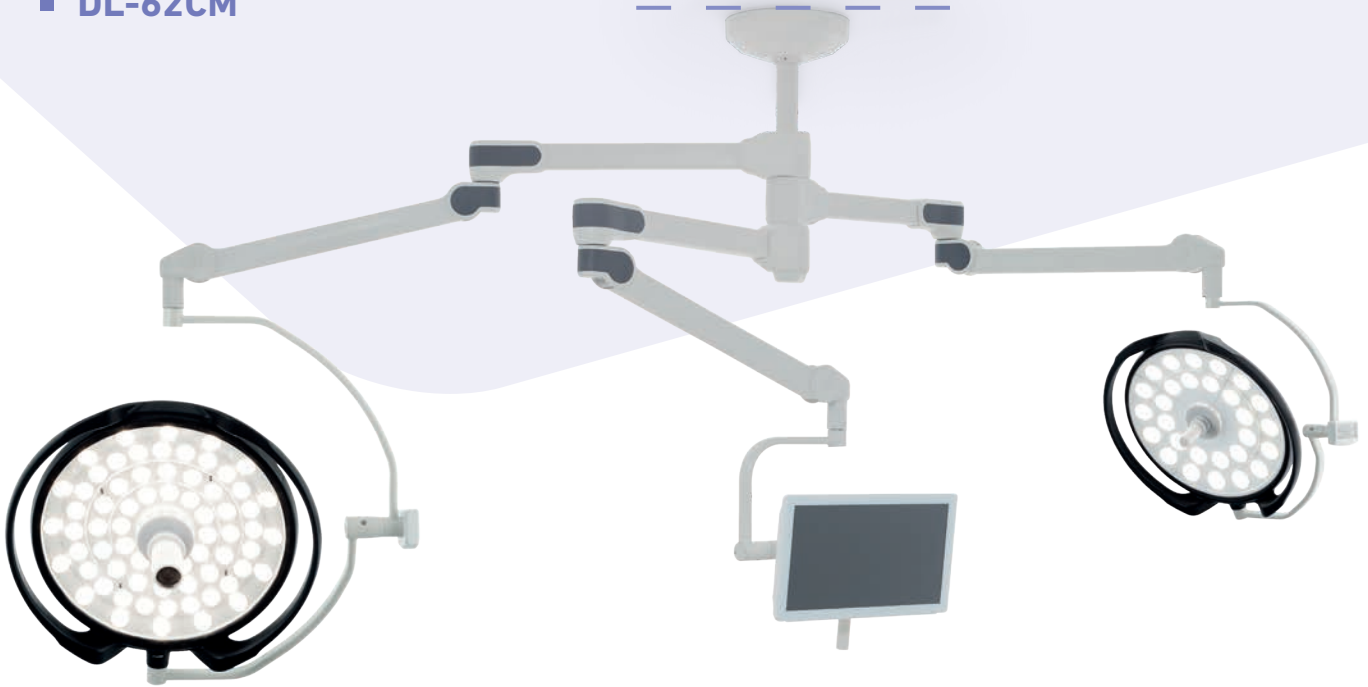
Lighting the Way in Surgery

Operating lamps have a unique role among the many tools and equipment used in the operating room. Üzümcü operating lamps are the reliable assistant of surgeons in the operating theatre. It provides confidence by maximizing visibility with its advance technology during the surgery.

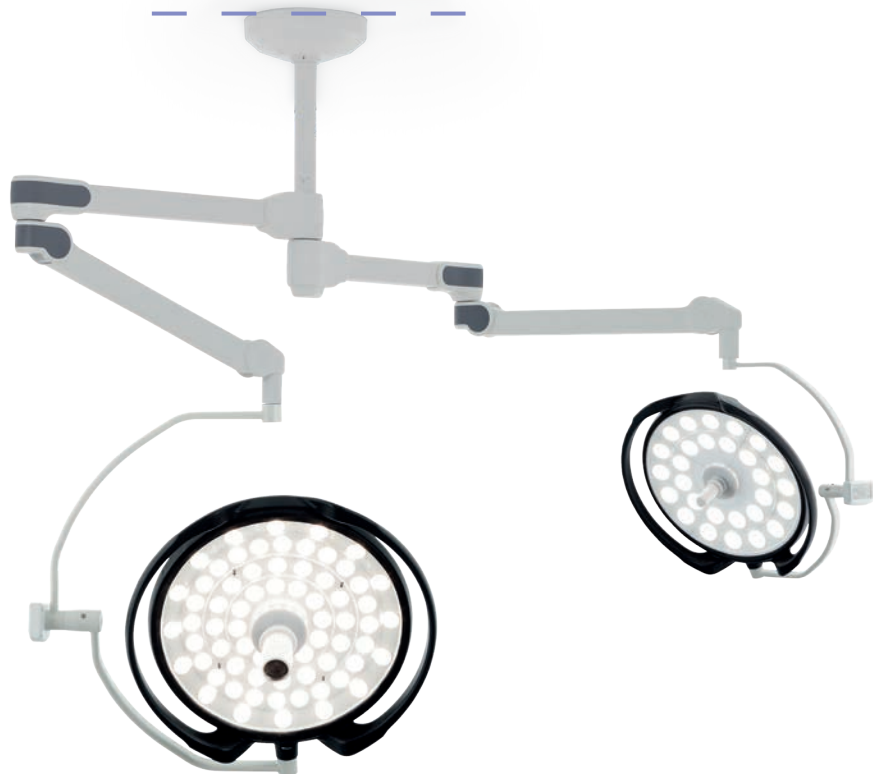
OPERATING LIGHTS



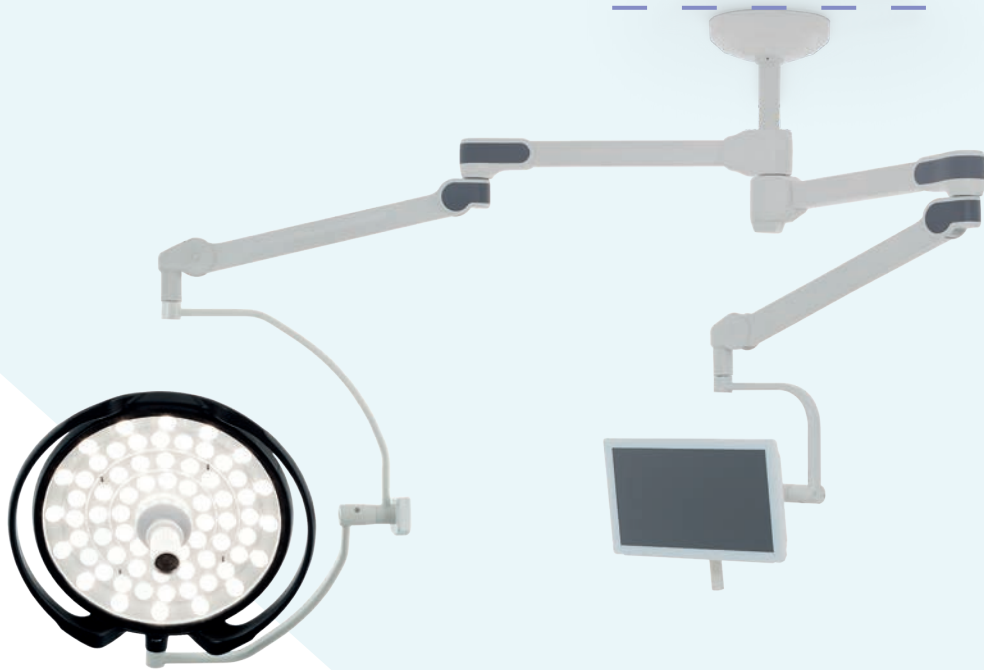
TRIPLE ARM WITH MONITOR ON ARM
DL-62CM



DOUBLE ARM WITH CAMERA
DL-62C



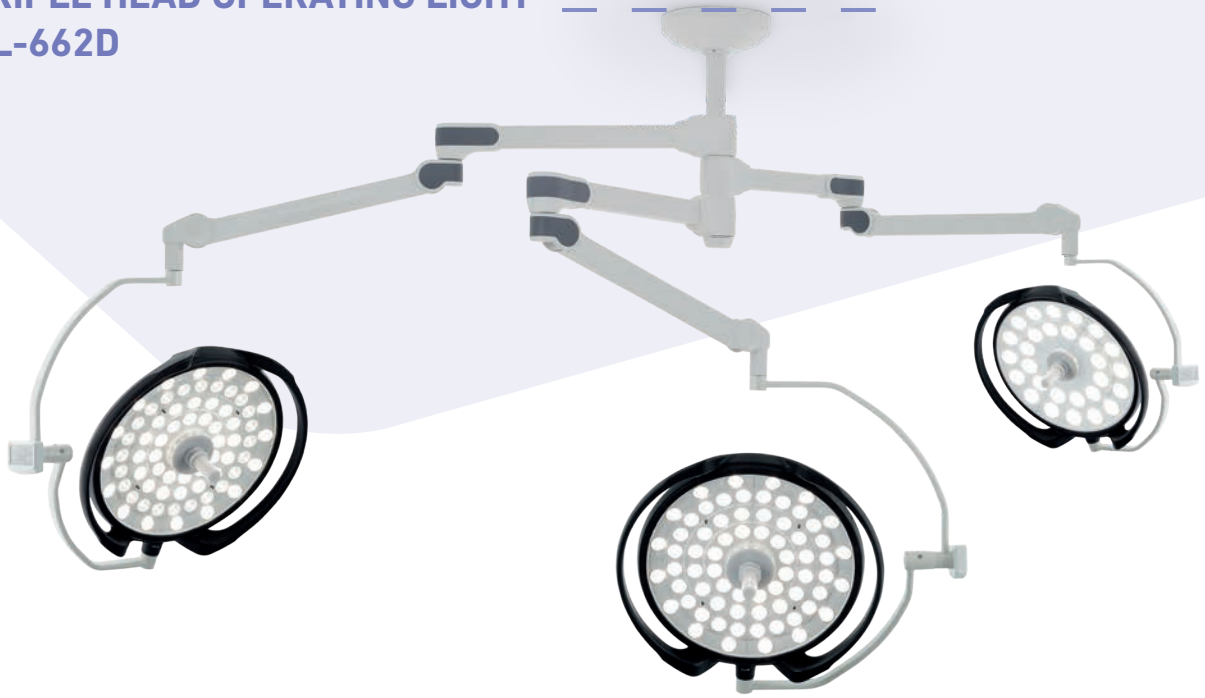
**DOUBLE ARM WITH MONITOR & CAMERA
DL-6CM**



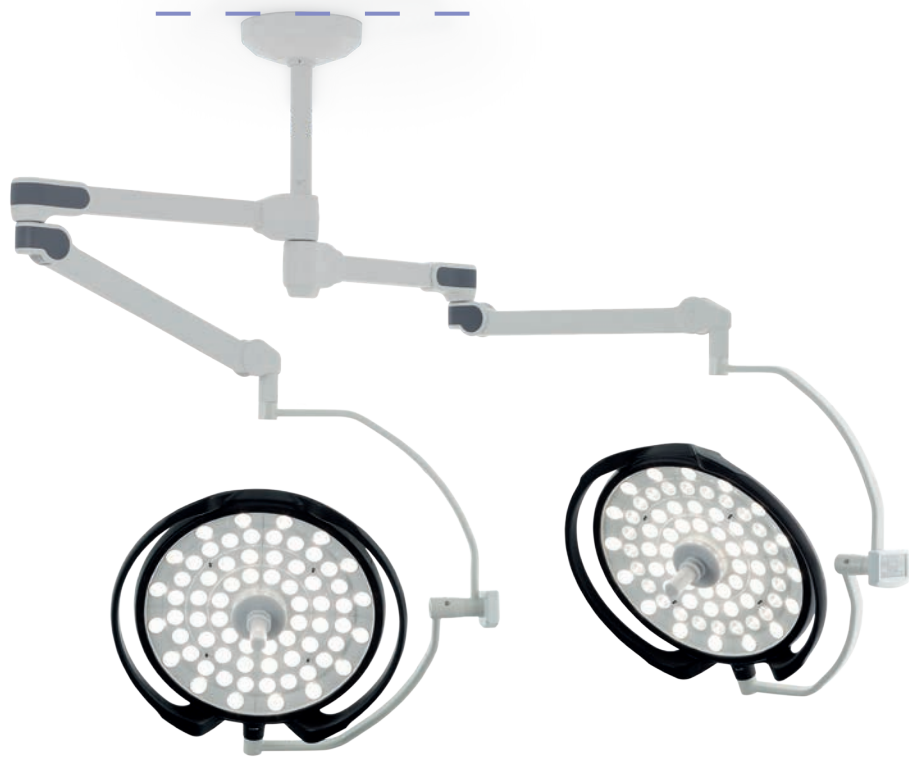
**DOUBLE ARM WITH MONITOR ON WALL
DL-66CMW**



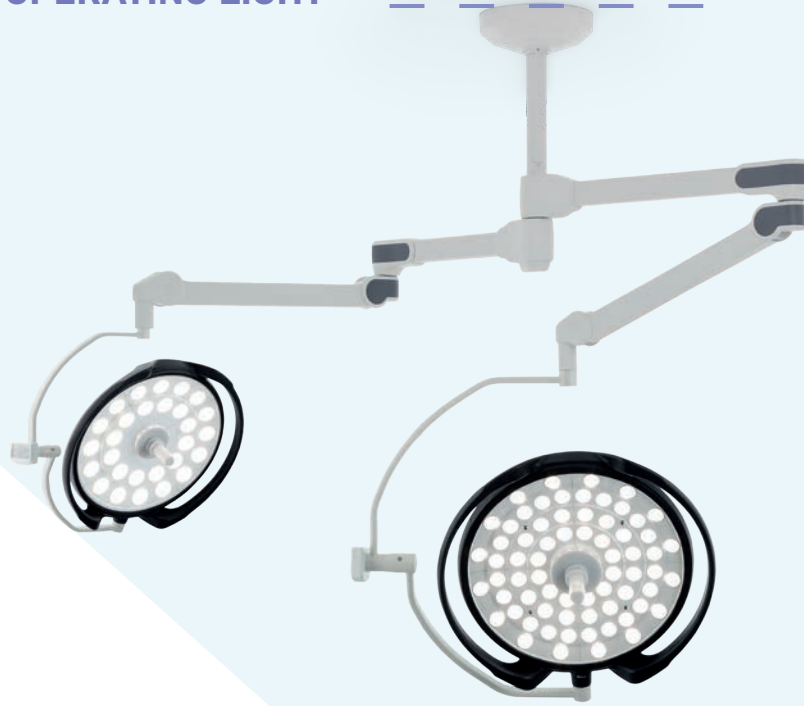
TRIPLE HEAD OPERATING LIGHT
DL-662D



DOUBLE HEAD OPERATING LIGHT
DL-66D



**DOUBLE HEAD OPERATING LIGHT
DL-62D**



**SINGLE HEAD OPERATING LIGHT
DL-6D**



SINGLE SATELLITE HEAD OPERATING LIGHT DL-2D



MOBILE OPERATING LIGHT DL-2MB

Battery & Control Panel

Battery system running automatically in case of electricity failure and providing continuous energy for 2,5 hours. Multi-functional control panel for monitoring battery status and adjusting lamp function.

- Illumination power : 120.000 lux
- Battery back up : 2,5 hours
- Dimming range : 1-100%
- Color temperature : 3500 - 5000 K
- Package Weight : 70 kgs





LED Technology

- High LED technology fulfilling lighting requirements of any kind of operation
- Maximum lighting level by a single button
- LED bulbs of the lamp may be changed individually and have 50.000 hours of lifetime



Slim Head Design

- Head design with low aerodynamic resistance protects the surgical room's laminar flow



Sensor Technology & Endoscopy Mode

- Sensor technology enabling automatic lighting off related LED sections and preventing formation of shadow on the lighting area when faced with a barrier
- Sustainable functionality for endoscopic and minimally invasive surgical procedures by a single light function (endolight function)
- Adjustable color temperature between 3500-5000 °K
- LCD colour touchscreen control panel controlling all functions



Camera System & Focusing

- Camera and medical monitor practically integrable with the lamp head for training purposes. It enables monitoring and recording operations.



Touch Screen Control Unit

- User friendly 4.3" LCD touch screen unit is used to easily control all functions by tapping and swiping the icons.

TECHNICAL SPECIFICATIONS

MODEL	MAIN LIGHTHEAD	SATELLITE LIGHTHEAD
Diameter of lighthouse	Ø650 mm	Ø440 mm
Illumination power, in 1 m	160.000 Lux	120.000 Lux
Color temperature	3500 K - 5000 K	3500 K - 5000 K
Color rendering index, Ra CRI	96%	96%
Dimming Range	% 1 – 100	% 1 – 100
Adjustable focus diameter	120 – 300 mm	150 - 170 mm
Temperature increase in surgical area	< 0,5°C	< 0,5°C
Number of LED modules	68	28
Lifetime of LED	60.000 hours	60.000 hours
IP Protection Class	IP 54	IP 54
Irradiance at nominal illuminance	530 W/m ²	430 W/m ²
Total Weight Head and Cardanic Arms	16 kgs	9 kgs

Camera Specifications

Monitor Specifications

Full HD Analog Camera	Panels	: Color (VA)
1/3" Type CMOS Sensor	Viewing Area	: 27"
Full HD 1920x1080p	Resolution	: 1920 (W) x 1080 (H) pixels
10x Optical Zoom	Display Ratio	: 16:9
Auto Focus	Viewing Angle	: 178°
HDMI Video Output	Dimensions	: 657 (L) x 399 (W) x 59.5 (H)

Üzümçü LED operating lights are designed to meet all lighting and viewing requirements of operating theatres. Powerful LED technology with high-tech camera solution helps the surgeons to operate and view the surgery area clearly. Üzümçü LED lights can be adapted in any size of operating theatres including large hybrid types with variety of models & combinations.



Guiding Surgical Mastery: The Power of LED Illumination

Energy Efficiency: LED lights are highly energy-efficient compared to traditional incandescent or fluorescent lights. They consume less power, resulting in lower energy costs and reduced environmental impact.

Longevity: LEDs have an impressive lifespan, lasting up to 60,000 hours. This longevity means that LED surgical lights require fewer bulb replacements, resulting in reduced maintenance and operational costs.

Brightness and Color Accuracy: LED lights produce bright, white light that closely resembles natural daylight. This characteristic enhances visibility during surgery and allows for accurate color representation, making it easier for surgeons to differentiate tissues and organs.

Directional Lighting: LED surgical lights can be designed with adjustable beam angles and spotlights, allowing surgeons to focus light precisely where it is needed. This versatility helps to minimize shadows, improve visibility, and enhance surgical outcomes.

EXAMINATION LIGHT



TECHNICAL SPECIFICATIONS

Illumination	: 30.000 Lux / 0,4 m
Light Head Diameter	: Ø100 mm
LED Lifetime	: 60.000 hours
CRI	: 95%
Number of LED Modules	: 6
Color Temperature	: 4500 K
Inlet Voltage	: 100 -240 V AC / 50-60 Hz
Dimensions	: ML-70L, 600 mm, ML-45L, 1295 mm, ML-40L, 1745 mm,





LED Technology

- Advanced LED technology to fulfill lighting requirements of any kind of surgery and examination
- Well-focused lighting with LED bulbs connected to specially developed reflector
- The technology does not require maintenance during the bulb's lifetime

Cleaning & Disinfection

- Cleaning and disinfection solution-proof. Flat and smooth surfaces

Customised Production Solutions

- Customised production solutions with mobile and rail type options

Body Structure & Head Design

- Head can be positioned in required area and can be rotated 360-degree thanks to its spiral body structure
- Modern and aesthetics design

“Empower Precision, Higher Precision Faster Healing”

Üzümcü ESU devices combine precision, safety and efficiency to deliver exceptional results for both patients and healthcare professionals.



ELECTROSURGICAL DEVICES



ELECTROSURGICAL DEVICES EK-410, EK-250

EK-410 and EK-250 electro-surgical devices with 400 W and 250 W maximum output power options are devices that can be used in all types of surgeries, like general surgery, orthopedics, urology, cardiovascular surgery and neurosurgery with high performance and micro operation technology.

- Multiple cutting modes with adjustable modulation levels
- LCD Screen for Monitoring Device Functions
- Visual and Audio Alarms
- Vessel Sealing Feature
- Suitable for Synchronized Use of Two Surgeons
- Digital Screen for Monitoring Energy Output Powers
- Bipolar Use Automatic Activation
- Changing of Sound by Operation
- Bipolar Cutting




TECHNICAL SPECIFICATIONS

MONOPOLAR	EK-410	EK-250
Maximum Output Power Pure CUT	400 W - 300 Ω	250 W - 300 Ω
Maximum Output Power Cut-Coag CUT80%	300 W - 300 Ω	220 W - 300 Ω
Maximum Output Power Cut-Coag CUT60%	250 W - 300 Ω	200 W - 300 Ω
Maximum Output Power Cut-Coag CUT40%	200 W - 300 Ω	150 W - 300 Ω
Maximum Output Power Cut ENHANCED	250 W - 300 Ω	150 W - 300 Ω
Maximum Output Power Cut-Coag BLEND	250 W - 300 Ω	150 W - 300 Ω
Maximum Output Power Coag SPEEDY	120 W - 500 Ω	100 W - 500 Ω
Maximum Output Power Coag DEEP	120 W - 200 Ω	100 W - 200 Ω
Maximum Output Power Coag SPRAY	100 W - 2000 Ω	60 W - 2000 Ω
Maximum Output Power Coag SPRAY ARGON	100 W - 2000 Ω	60 W - 2000 Ω
BIPOLAR		
Maximum Output Power Pure CUT	120 W - 50 Ω	120 W - 50 Ω
Maximum Output Power Cut-Coag CUT80%	100 W - 50 Ω	100 W - 50 Ω
Maximum Output Power Cut-Coag CUT60%	100 W - 50 Ω	100 W - 50 Ω
Maximum Output Power Cut-Coag CUT40%	60 W - 50 Ω	60 W - 50 Ω
Maximum Output Power Cut-coag BLEND	120 W - 50 Ω	120 W - 150 Ω
Maximum Output Power Coag COAG	120 W - 50 Ω	120 W - 50 Ω
Vessel Sealing Feature	200 W - 50 Ω	200 W - 50 Ω
Working Frequency Monopolar / Bipolar	425 kHz / 525 kHz	425 kHz / 525 kHz
Selectable Input Voltage	115 - 230 V AC / 50-60 H	115 - 230 V AC / 50-60 H
Dimensions	470 x 380 x 150 mm	470 x 380 x 150 mm


Cutting & Coagulation Types (EK-410 and EK-250)

Monopolar Cutting




Pure cutting by monopolar handle and blend cutting at 60%, 70%, 80% modulation levels

Superficial Blend Cutting




Superficial blend cutting in which cutting function is executed with coagulation function

Deep Blend Cutting




Deep blend cutting in which cutting function is executed with coagulation function

Monopolar Superficial Coagulation




Superficial coagulation in which electrode contacts with tissue

Monopolar Deep Coagulation




Deep coagulation in which electrode contacts with tissue

Spray Coagulation




Spray coagulation in which electrode has no contact with the tissue, micro bleedings are immediately controlled

Bipolar Cutting




Blend cutting executed by bipolar forceps, pure and at 60%, 70%, 80% modulation levels

Coagulation with Bipolar Automatic Activation




Controlled coagulation by automatic start/stop function in bipolar coagulation

Argon Coagulation




Spray coagulation in which micro bleedings are immediately controlled

Bipolar Coagulation



Vessel Sealing



Vessel sealing function in laparoscopic and open surgeries



“Electrocautery Technology for Quick and Precise Cutting”





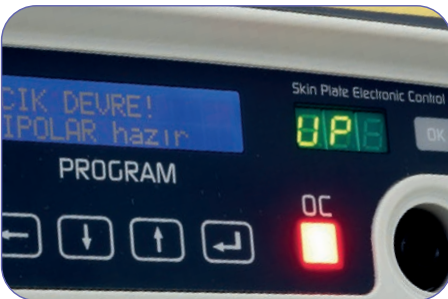
Cutting & Coagulation Options

- FORZA electrocautery devices can be used in all surgery branches like general surgery, orthopaedics, urology, cardiovascular surgery, and neurosurgery with 400 W and 250 W maximum output power options
- Advanced technology with automatic self-test feature at each start up informs the user about device functions
- Blend cutting modes with pure cutting and at 5 different modulation levels
- Wide, rapid, and non-contact coagulation with spray coagulation mode
- Safe hemostasis by superficial and deep contact coagulation modes



Error Record System

- Controlled coagulation by autostart and autostop functions at bipolar mode
- Suitable for synchronized use of two surgeons at monopolar and bipolar modes in multi operations
- Compatibility with foot switch and manual use
- Record system for monitoring failures of device functions or accessories with their codes, recording 99 failures and providing possibility for rapid technical service by monitoring retrospective failures



Patient Safety System & Memory

- Contact impedance between patient body and return electrode is continuously watched by Skin Plate Electronic Control (SPEC)
- 50 different usage modes can be stored in the memory by pre-programming method, offering possibility for immediate call



Vessel Sealing Function

- Effective and safe sealing process in laparoscopy, open surgery veins and muscles bundles thanks to the vessel sealing function integrated onto cautery device

ELECTROSURGICAL DEVICES EK-160

EK-160 Electrosurgical Device is designed for minor surgeries and polyclinic practices with 160 W maximum output power and monopolar and bipolar functions

- Pure and Blend Cutting, Superficial and Deep Coagulation
- Automatic System Control at Each Start Up
- Bipolar Coagulation
- Adjustable Power and Sound Levels
- Compatibility with Foot Switch and Manual Use






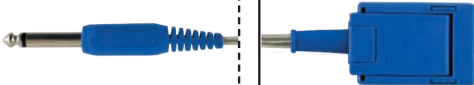


TECHNICAL SPECIFICATIONS

Maximum Output Power Pure CUT	160 W - 250 Ω
Maximum Output Power CUT	120 W - 200 Ω
Maximum Output Power FORCED COAG	100 W - 150 Ω
Maximum Output Power SOFT COAG	80 W - 100 Ω
Maximum Output Power BIPOLAR	60 W - 100 Ω
Working Frequency	600 kHz
Selectable Input Voltage	115 - 230 V AC / 50-60 Hz
Dimensions	280x254x104 mm



ACCESSORIES

	Finger-Switch Pencil Reusable	44.1007
	Finger-Switch Pencil Disposable	44.1008
	Silicone Bipolar Cable 3.0 M Instrument Connector : Generator Connector:	44.1067 Ethicon 4mm Banana Plug
	Silicone European Bipolar Cable 3.0 M Instrument Connector : Generator Connector:	44.1039 European Flat Plug 4mm Banana Plug
	Silicone Diathermy Cable 3.0 M Instrument Connector: Generator Connector:	44.1081 4mm Male Fitting (European Diathermy) 4mm Banana Plug
	Patient Return Cable 3.0 M	44.1010

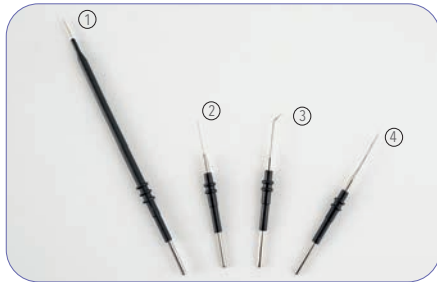
ACCESSORIES



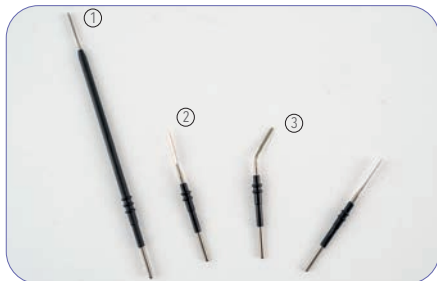
Ball Type Electrodes



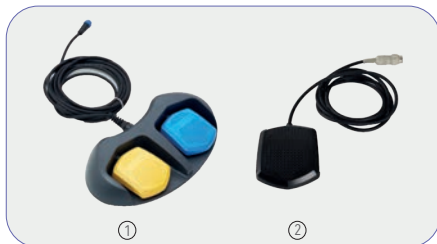
Circle & Loop Type Electrodes



Needle Type Electrodes



Blade Type Electrodes



Waterproof Foot Pedals

No.	Ball Type Electrodes	Code
1	Dia. 2mm, 7 cm, straight, reusable	44.1071
2	Dia. 3mm, 7 cm, straight, reusable	44.1015
3	Dia. 4mm, 7 cm, straight, reusable	44.1017
4	Dia. 5mm, 7 cm, straight, reusable	44.1070
5	Dia. 3mm, 13 cm, straight, reusable	44.1021
6	Dia. 5mm, 13 cm, straight, reusable	44.1022
7	Dia. 2mm, 7 cm, curved, reusable	44.1027
8	Dia. 3mm, 7 cm, curved, reusable	44.1016
9	Dia. 4mm, 7 cm, curved, reusable	44.1028
10	Dia. 5mm, 7 cm, curved, reusable	44.1018

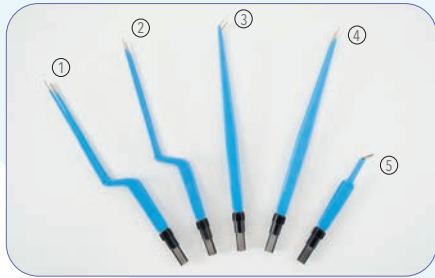
No.	Circle & Loop Type Electrodes	Code
1	Circle Loop Electrode 6mm, reusable	44.1159
2	Circle Loop Electrode 8mm, reusable	44.1160
3	Circle Loop Electrode 4mm, reusable	44.1161
4	Loop Electrode 20x20 cm, reusable	44.1025
5	Loop Electrode 10x10 cm, reusable	44.1024
6	Loop Electrode 20x20 cm, reusable	44.1023
7	Conization Electrode 13x15 mm, reusable	44.1026

No.	Needle Type Electrodes	Code
1	Needle Electrode 13cm, straight, reusable	44.1019
2	Needle Electrode 7cm, straight, reusable	44.1013
3	Needle Electrode 7cm, curved, reusable	44.1014
4	Fine Needle Electrode 7cm, straight, reusable	44.1145
5	Needle Electrode 7cm, straight, disposable, non-stick	44.1146
6	Needle Electrode 7cm, straight, disposable	44.1147

No.	Blade Type Electrodes	Code
1	Blade Electrode 15cm, straight, reusable	44.1020
2	Blade Electrode 7cm, straight, reusable	44.1011
3	Blade Electrode 7cm, curved, reusable	44.1012

No.	Waterproof Foot Pedals	Code
1	Double Water-Proof Foot-Switch	44.1042
2	Single Water-Proof Foot-Switch	44.1041





Europen Bipolar Forceps



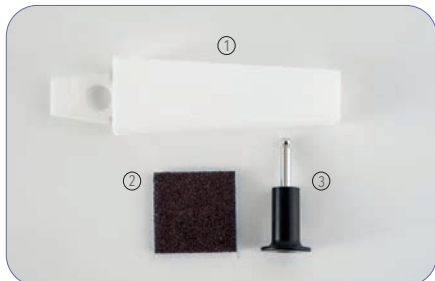
Blade Type Electrodes



Scissors & Artery Sealer / Diathermy Instruments



Patient Return Plates



Other Accessories

No.	Europen Bipolar Forceps	Code
1	Dia. 2mm, 20 cm, Bayonet, reusable	44.1032
2	Dia. 1mm, 20 cm, Bayonet, reusable	44.1036
3	Dia. 1mm, 20 cm, angled, reusable	44.1037
4	Dia. 1mm, 20 cm, straight, reusable	44.1034
5	Dia. 0.7mm, 11.5cm, Jeweler, reusable	44.1038
7	Dia. 2mm, 20 cm, straight, reusable	44.1035

No.	Blade Type Electrodes	Code
1	Bipolar Electrode, 20 cm, angled, reusable	44.1031
2	Bipolar Electrode, 19 cm, angled 45, reusable	44.1030
3	Bipolar Electrode, 20 cm, straight, reusable	44.1029

No.	Scissors & Artery Sealer	Code
1	Bipolar Artery Sealer , 16cm, reusable, non-stick	44.1046
2	Bipolar Artery Sealer , 22cm, reusable, non-stick	44.1047
3	Bipolar Scissor, 18cm, curved, reusable	44.1150
4	Bipolar Artery Sealer, 26cm, reusable, non-stick	44.1044

Diathermy Instruments

5	Wilson Hey Forcept 17.8cm, monopolar male 4mm conn., reusable,	44.1077
6	Artery Forcept 17.8cm, monopolar male 4mm conn., reusable	44.1074

No.	Patient Return Plates	Code
1	Monopolar Patient Plate, disposable	44.1009
2	Bipolar Patient Plate, disposable	44.1152
3	Monopolar Patient Plate, 16x12 cm, reusable	44.1153

No.	Other Accessories	Code
1	Holster (Electrodes&Pencils)	44.1065
2	Tip Cleaner (Electrodes&Pencils)	44.1066
3	Bipolar Adaptor	44.1040

“Brand New Design, Same Reliability”

Suction Devices are one of the oldest specialty of Üzümcü.
We are proud that more than 25.000 devices work smoothly
all around the world.

SURGICAL SUCTION UNITS



SURGICAL SUCTION DEVICES NOVELA

Novela surgical suction devices are designed for the suction of surgical fluids, gases and other wastes in operation area during and after the surgery. Device creates stable vacuum performance at adjusted vacuum level thanks to its maintenance free oil-less vacuum pump.

- On / Off Button
- Manometer
- Vacuum Level Adjustment Knob
- Jar Switch Button
- Liquid Collection Jars
- Accessory Compartment
- Bumper Base
- Robust and Easy to Clean Main Body
- Antistatic Castors

JAR CAPACITY	: 3 L - 5 L
PUMP	: Oil-free type
FLOW RATE	: 60 L/Min
MAX. VACUUMING POWER	: 680 mmHg (~90kPa, 0,90 bar) (at sea level)
NOISE	: Max.55 dB
VACUUM ADJUSTMENT	: By Control Knob
DIMENSIONS (WxLxH)	: 450x550x930 mm



Compact body with flexible jar options:
2×3L in front, 2×3L or 2×5L at the back.



SURGICAL SUCTION DEVICES NOVELA EXTRACTOR

Novela Extractor surgical suction device allows surgical team to control vacuum power instantly by the foot pedal. This helps to maintain the sterile environment by freeing up the hands.

JAR CAPACITY	: 3 L - 5 L
PUMP	: Oil-free type
FLOW RATE	: 60 L/Min
MAX. VACUUMING POWER	: 680 mmHg (~90kPa, 0,90 bar) (at sea level)
NOISE	: Max.55 dB
VACUUM ADJUSTMENT	: By Control Knob
DIMENSIONS (WxLxH)	: 450x550x950 mm



Compact body with flexible jar options:
2×3L in front, 2×3L or 2×5L at the back.

SURGICAL SUCTION DEVICES NOVELA THORACIC

Novela Thoracic suction device creates low flow, sensitive suction which allows fluid or air to be sucked out of the chest.

JAR CAPACITY	: 3 L - 5 L
PUMP	: Oil-free type
FLOW RATE	: 8 L/Min
MAX. VACUUMING POWER	: 680 mmHg (~90kPa, 0,90 bar) (at sea level)
NOISE	: Max.55 dB
VACUUM ADJUSTMENT	: By Control Knob
DIMENSIONS (WxLxH)	: 450x550x950 mm

Compact body with flexible jar options:
2×3L in front
2×3L or 2×5L at the back.



SURGICAL SUCTION DEVICES NOVELA LIPOSUCTION

Novela Liposuction device is designed to create stable and high vacuum flow for required operations like cosmetic surgeries.

JAR CAPACITY	: 3 L - 5 L
PUMP	: Oil-free type
FLOW RATE	: 110 L/Min
MAX. VACUUMING POWER	: 680 mmHg (~90kPa, 0,90 bar) (at sea level)
NOISE	: Max.55 dB
VACUUM ADJUSTMENT	: By Control Knob
DIMENSIONS (WxLxH)	: 450x550x950 mm

Compact body with flexible jar options:
2×3L in front, 2×3L or 2×5L at the back.



PORTABLE SUCTION DEVICES

PA-2, Portable / PA-2S, Portable with Stand / PA-1R, Portable with Battery

Üzümçü portable suction devices are designed to be used in minor surgical interventions, ICU's, inpatient services, dental operations and ambulances. Ergonomic design and stable high vacuum power makes it very useful in those areas.

JAR CAPACITY	: 2 L
PUMP	: Oil-free type
FLOW RATE	: 22 L/Min
MAX. VACUUMING POWER	: PA-1R: 0-450 mmHg (at sea level) : PA-2,PA-2S: 0-630 mmHg (at sea level)
NOISE	: Max.65 dB
BATTERY USAGE	: 45 min (PA-1R)
DIMENSIONS (WxLxH)	: PA-1R: 230x420x370 mm : PA-2S: 310x310x1000 mm : PA-2: 230x420x370 mm



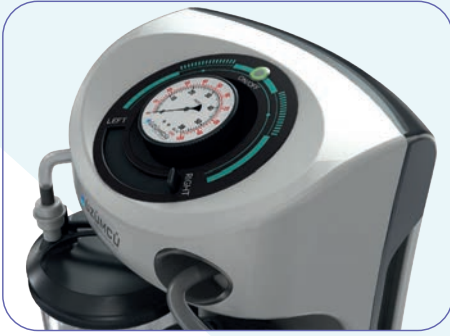
PA-1R / PA-2



PA-2S

**“Robust & Powerful Devices with
Stylish & Ergonomic Design”**





Main Body, Pump and Control

- Rapid suction with 60 L/Min flow rate, adjustable vacuum power at 680 mmHg
- Vacuum adjustments by easily accessible control panel and vacuum manometer for monitoring vacuum level
- Maintenance free, silent, non-vibrating, oil free vacuum pump
- Easy to clean, robust body design which is suitable for hospital



Superior Performance

- Our surgical aspirators are engineered with precision and backed by advanced technology to ensure exceptional suction power, enabling efficient removal of fluids, tissues, and debris during surgical procedures.
- Üzümcü Surgical Suction Device family offers a range of models to be used in various surgical specialties, ensuring that healthcare professionals have access to the most appropriate aspirator for their specific needs.



Pump Protection System

- Protective technology preventing overflowing and liquid leakage to pump system by integrated buoy system and hydrophobic filter



Wide Range of Jars

- Collecting jars with scaled body, integrated & easy to carry handle
- 3 L and 5 L capacity options for autoclavable polycarbonate jars

Surgical Suction Jar

- Made of transparent polycarbonate material
- 2 L, 3 L and 5 L carrying capacity alternatives
- Sterilizable jars at 121° C
- Adapter for wall connection
- Integrated hydrophobic filter

34.1269	5L
90.1337	3L

A photograph of a stainless steel hospital gurney or table, showing its frame, wheels, and a flat top surface. The image is partially obscured by a large, light purple, abstract shape that contains the text.

“Improvement of Standards in Hygienic Hospital Furniture”

We are proud of extensive collection of stainless steel hospital furniture, designed to meet the specific needs and demands of modern healthcare settings. Stainless steel is renowned for its exceptional strength, durability and resistance to corrosion, making it an ideal material choice for healthcare furniture.

STAINLESS STEEL HOSPITAL EQUIPMENT





**Your Safety in Stainless Care:
Empowering Clean Hands,
Healing Hearts.**

Material: Stainless steel construction to ensure long-lasting performance and easy maintenance.

Multiple Faucets: The unit may have multiple faucets to allow simultaneous handwashing by multiple individuals.

Foot Pedal or Sensor Activation: To minimize hand contact and reduce the risk of contamination, some units may feature foot pedal or sensor-activated faucets.

Splash Guards: Built-in splash guards around the sink to prevent water splashing and maintaining a clean environment.

Soap Dispensers: Integrated soap dispensers to ensure access to handwashing agents for effective cleaning.

Specially designed with round concave corners, easy to clean and antibacterial material considering the areas of use & user's requests and to be compatible with international hygienic norms.

SURGICAL SCRUB SINKS 80600 / 80800

- Photocell and knee controlled water flow knee controlled soap flow at each station
- Thermostatic mixing valve for cold and hot water
- Touch free control lets the users keep their hand antiseptis in usage
- Made from high quality and durable material
- Multiple basin configurations

MODEL	DIMENSIONS (DXWXH)	EXPLANATION
80600	680x800x1260 mm	Single
80700	680x1600x1260 mm	Double
80800	680x2200x1260 mm	Triple



- LCD screen displays water temperature and wash timer



BRUSH HOLDER 87010

- 18 brush capacity made made of 304 quality stainless steel
- Sterilizable brush holder
- Wall connection apparatus

DIMENSIONS (DxWxH) : 140x80x520 mm



BRUSH HOLDER 87030

- Dispenser for keeping disposable brushes
- Three channel body made of 304 quality stainless steel
- Total 30 disposable brush capacity
- Wall connection apparatus

DIMENSIONS (DxWxH) : 120x250x400 mm



LIQUID SOAP DISPENSER 87065

- Elbow controlled stainless steel handle
- Adjustable soap amount
- Wall connection apparatus



LIQUID SOAP DISPENSER 87075

- Photocell controlled
- Adjustable soap amount and long battery life with low energy consumption
- Hygienic anodized aluminium body
- Autoclavable pump system
- Wall connection apparatus



LIQUID SOAP DISPENSER 87050

- Foot pump controlled
- Wall connection apparatus



MAYO TABLE, HYDRAULIC 40410

- Designed by considering areas of use and user's requests, made of 304 quality stainless steel
- Design compatible with international hygiene norms, with rounded concave corners, easy to clean, and antibacterial press print
- Rotatable upper tray independent of foot section
- 3 Castors (Ø75x60 mm), 2 with Brake
- Adjustable height between 900 - 1200 mm controlled by hydraulic foot switch

DIMENSIONS (DxWxH) : 540x740x900-1200 mm



MAYO TABLE, MANUAL 40460

- 304 quality stainless steel production designed by considering the usage areas and user demands
- Manual height adjustment
- Produced in accordance with international norms of hygiene, rounded concave corners, easy to clean, and bacteria free surface with press print
- Rotatable top tray independent of the foot section
- 3 castors, 2 of them with break

DIMENSIONS (DxWxH) : 540x740x990-1420 mm



INSTRUMENT TABLE 40078 / 40095

- Designed for operating and intervention rooms by considering user's expectations, made of 304 quality stainless steel
- Demountable
- 4 castors, 2 of them with break
- Optional 1 pc drawer

DIMENSIONS (DxWxH)

40078	500x750x850 mm
40095	650x950x800 mm



FALCATE TABLE 40200

- Made of 304 stainless steel for operating and intervention rooms
- Two shelves in shape of falcate
- Upper tray with barrier
- 6 castors, 3 of them with break

DIMENSIONS (DxWxH) : 450x1700x1000 mm



ANAESTHESIA TROLLEY 40340

- Designed for operating and intervention rooms by considering user's requests, made of 304 quality stainless steel
- Design compatible with international hygiene norms, with rounded concave corners, easy to clean, and antibacterial press print
- One detachable wire basket
- 4 castors, 2 of them with break

DIMENSIONS (DXWXH) : 470x720x1510 mm



Easy to Use

- Contribution to patient therapy with rapid transportation advantage by collecting all medicine and equipment required for anaesthesia process with 5 drawers in different dimensions and four rows of transparent boxes

Working Area

- Optimum area use for devices and equipment with transparent medicine boxes, wire basket, and sliding working tray integrated with the table



HOUSEKEEPING TROLLEY 40860 / 40862

- Made of AISI 304 stainless steel
- Single, double and triple options
- Metal foot pedals to open the lids
- Special clips for plastic bags
- Lid color options
- 4 castors, 2 of them with break

MODEL	DIMENSIONS (DXWXH)	EXPLANATION
40860	440x400x400 mm	Single
40861	440x740x400 mm	Double
40862	440x1070x400 mm	Triple



- Durable base tray to support the weight of larger bags



- Single, double and triple basket alternatives are available for different departments of the hospital

- Hygienic no-touch lid opening by foot pedal

- Lid color options



EMERGENCY TROLLEY 75403

- Produced by considering user needs in emergency and intensive care areas. The product is ideal for keeping all the equipment needed for immediate treatment
- Integrated plastic separators & baskets in drawers
- Adjustable defibrillator tray integrated to the upper table
- Integrated cylinder holder, IV stand, stainless steel waste bin
- 6 drawers with lock

DIMENSIONS (WxLxH) : 620x860x1025 mm



DRESSING TROLLEY 75202

- Aluminum mainframe
- Easy to handle & easy to clean
- Trays are available in 50 mm, 100 mm and 200 mm heights
- 4 castors, 2 of them with break
- Accessories: medicine boxes, sharp container
- 4 drawers model has integrated plastic separators & baskets in drawers

DIMENSIONS (WxLxH) : 620x860x940 mm



MEDICINE TROLLEY 75303

- Easy to handle & easy to clean
- Trays are available in 50 mm, 100 mm and 200 mm heights
- 4 castors, 2 of them with break
- Accessories: IV stand, glove tray and waste bin
- 5 drawers model has integrated plastic separators & baskets in drawers

DIMENSIONS (WxLxH) : 620x860x980 mm



IV STAND 10310

- Made of stainless steel
- Hook height can be adjusted between 1200-2100 mm
- 4 hooks to hang serum
- Infusion devices mountable body structure
- Plastic base with 5 castors increasing balance

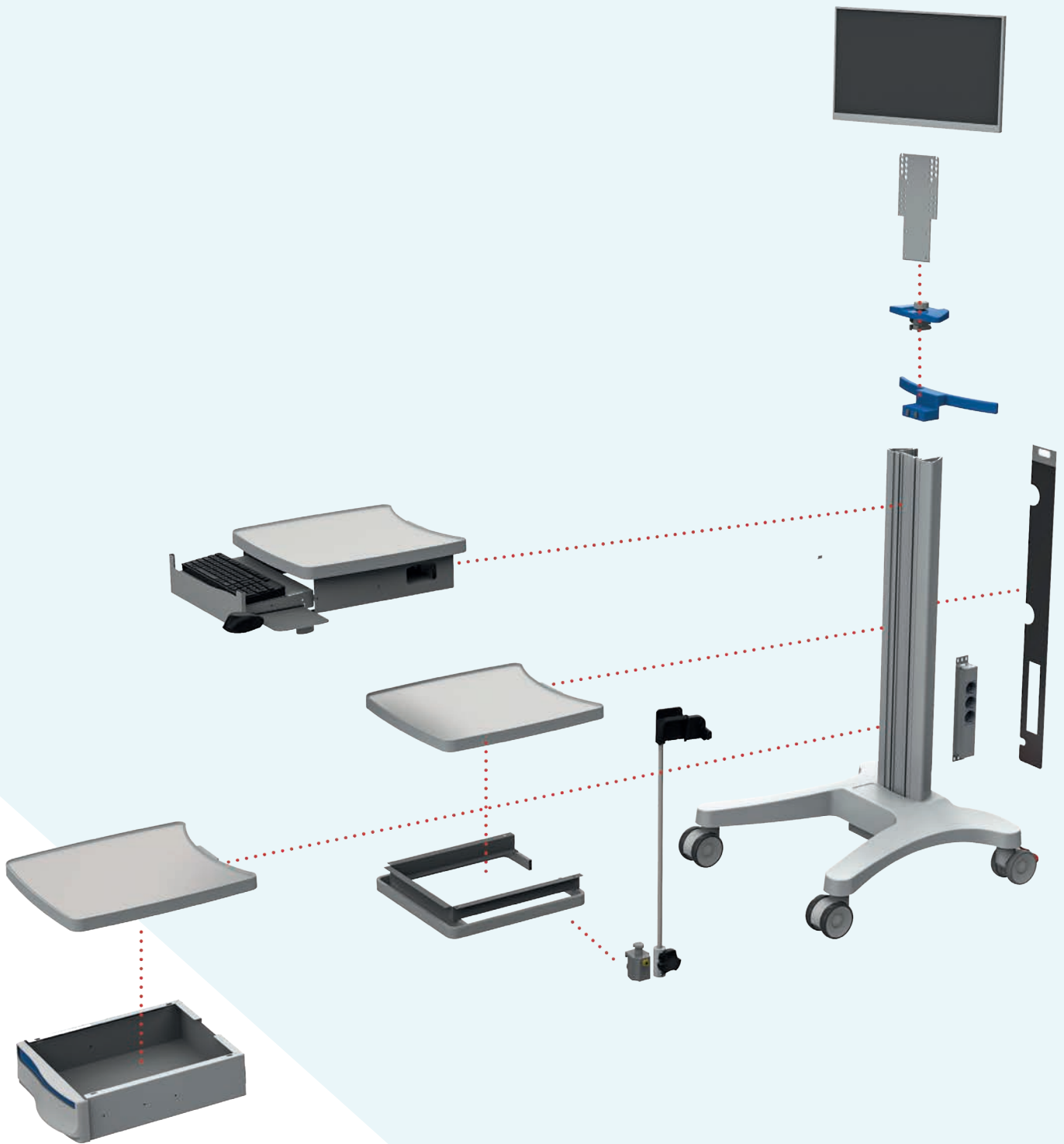


All dreams and demands are achievable with us.

Equipment carts are indispensable and necessary equipment that ensures the timeliness of medical services, the coherence of medical processes, the safe operation of all departments of the hospital.

MEDICAL CARTS





ECG CART EC10.01





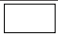
- 1 shelf, aluminum
- 1 accessory rail, stainless steel
- 1 basket
- 1 triple power socket
- 1 handle, aluminum
- 4 medical grade castors
- 2 with brake, Ø 100 mm
- Total carrying capacity 65 kg

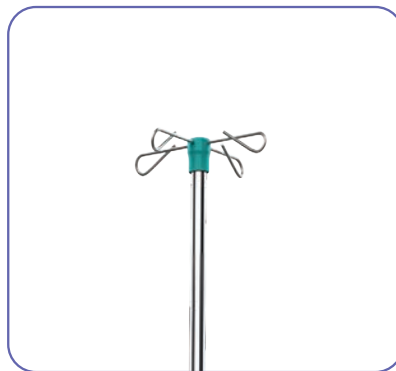
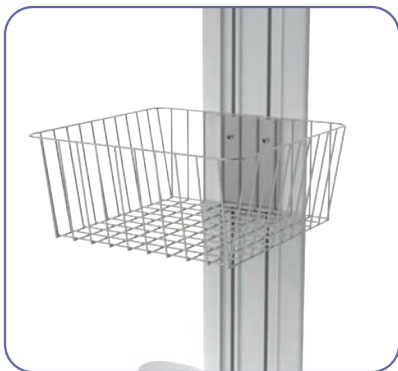
DIMENSIONS (WxLxH)

Cart 665x665x1180 mm

Shelf 430x465x32 mm

Color

RAL 6011 Green	
RAL 5015 Blue	
RAL 3020 Red	
RAL 1018 Yellow	
RAL 9010 White	








ENDO CART EC10.02

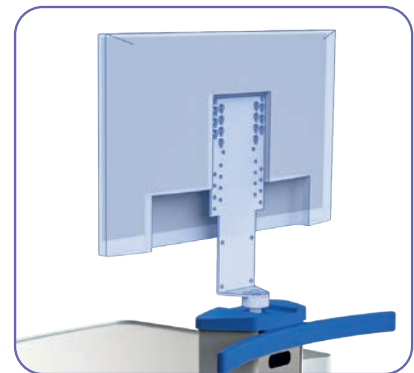
- 3 shelves, aluminum
- 2 drawer, aluminum
- 1 endoscope holder
- 1 monitor bracket
- 1 triple power socket
- 1 handle, aluminum
- 1 accessory rail, stainless steel
- 4 medical grade castors
- 2 with brake, Ø 100 mm
- Total carrying capacity 65 kg

DIMENSIONS (WxLxH)

Cart	665x665x1180
Shelf	430x465x32
Drawer	400x360x100

Color

RAL 6011 Green	
RAL 5015 Blue	
RAL 3020 Red	
RAL 1018 Yellow	
RAL 9010 White	



MAIN PART

Equipment Carts with Flexible Design

With its modern, sleek, and robust structure, this main module is designed with mobility, durability, and modularity in mind. Thanks to its wheeled base, it can be easily moved, while the vertical aluminum profile body is ready to adapt to various needs.

This main structure is developed with advanced engineering and offers user-specific solutions through a wide range of attachable accessories:

- Shelving systems
- Monitor mount
- Cable holder
- Any other accessories based on your needs

Whether used in hospital environments or industrial settings, its modular design ensures seamless adaptation to any requirement.

Shaped by your imagination,
developed to fit your needs.

DIMENSIONS (H)

Main Body 700 - 1000 - 1250 mm



Main Part



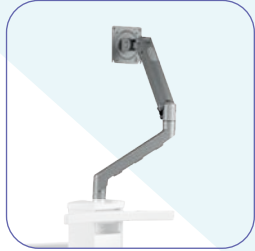
Required Parts



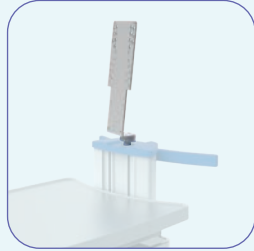
Accessories



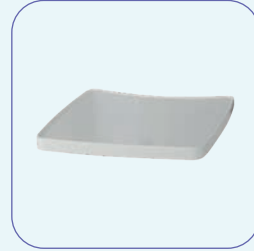
EQUIPMENT CARTS ACCESSORIES



Double Joint
Monitor Holder



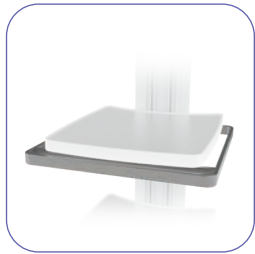
Monitor Holder



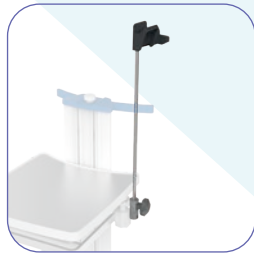
Shelf



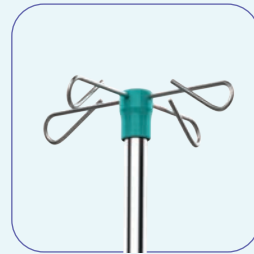
Shelf with Drawer



Accessory Rail



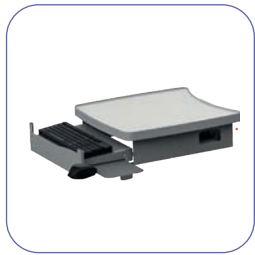
Endoscope Holder



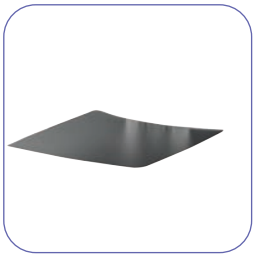
IV Stand, 4 hooks



IV Stand, 2 hooks



Keyboard Drawer



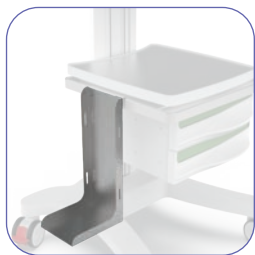
Stainless Steel Plate



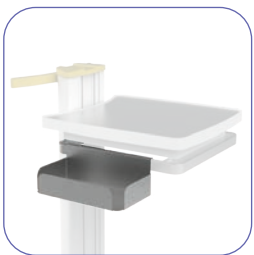
Disposable Waste Bin



Tissue Dispenser



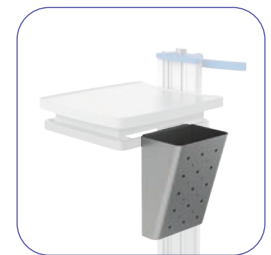
Oxygen Cylinder
Holder



Glove Tray



Basket



Waste Bin

Quality equipment which always meets your expectations.

We are happy to offer flexible solutions and requested design of the needed equipment. Your ideas are the source of our inspiration.







Headquarters & Factory

Ođulbey Mah. 3058 Cad. No:2 06830
Gölbaşı / Ankara - TÜRKİYE

t: +90 312 615 53 53

f: +90 312 615 53 90

www.uzumcu.com.tr

uzumcu@uzumcu.com.tr

The catalog is
in your pocket!
Scan the QR



CT-ME - 07.2025/01